

The Raimondi MRT573
topless tower crane
erected in Milan, Italy





MRT573





MRT573 - 24,0t - T4 UL

JIB (m)	36	40	44	50	54	60	64	70	76	80
3,3 m ▶	28,9 m	28,7 m	28,3 m	28,1 m	27,0 m	25,6 m	23,9 m	21,5 m	20,3 m	18,2 m
10	24000	24000	24000	24000	24000	24000	24000	24000	24000	24000
16	24000	24000	24000	24000	24000	24000	24000	24000	24000	24000
20	24000	24000	24000	24000	24000	24000	24000	24000	24000	21504
25	24000	24000	24000	24000	24000	24000	22799	20199	18809	16534
30	22981	22875	22487	22275	21337	20048	18497	16338	15179	13280
36	18700	18612	18291	18115	17339	16254	14961	13164	12195	10605
40		16500	16212	16054	15357	14374	13208	11591	10716	9279
44			14520	14377	13745	12844	11782	10310	9513	8200
50				12375	11821	11018	10080	8783	8077	6912
54					10780	10030	9159	7956	7300	6216
60						8800	8013	6927	6332	5349
64							7370	6350	5790	4863
70								5610	5094	4239
72									4889	4054
74									4694	3880
76									4510	3715
80										3410

 400 V ± 5% 50 Hz

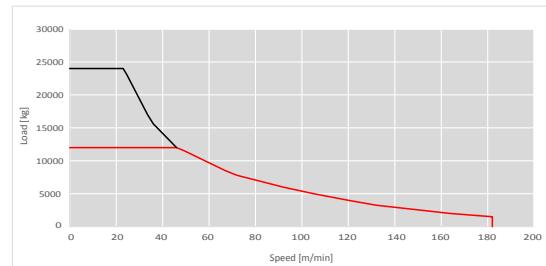


 2000 / 14 / CE

24,0t 150 hp 110 kW



	m/min	kg	m/min	kg
 1000 m	46	12000	23	24000
 Ø 18 mm	66	8500	33	17000
	106	5000	53	10000
	148	3250	74	6500
	182	1000	91	2000



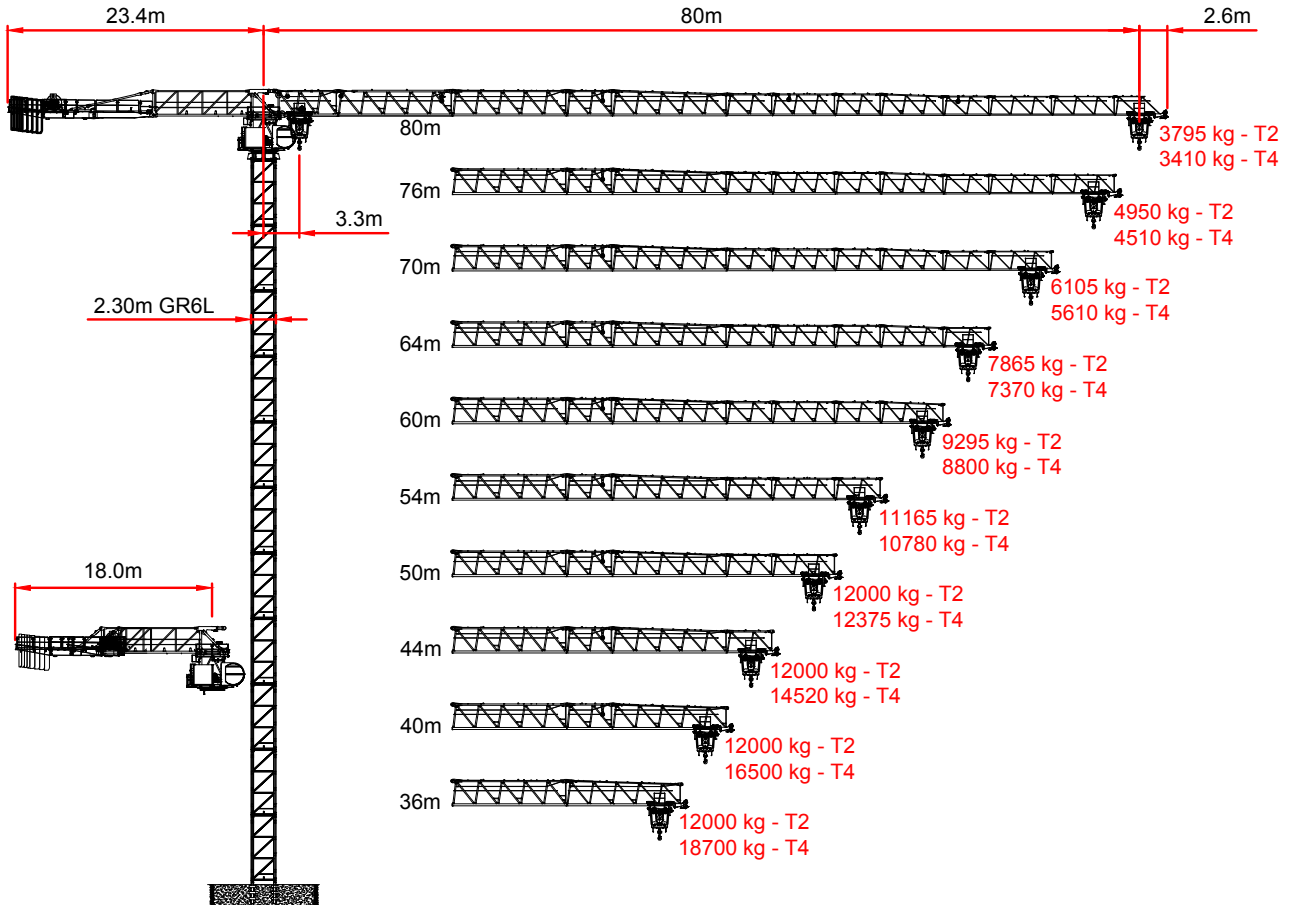
kVA **Power required** / Potenza richiesta / Puissance requise / Erforderliche Leistung / Потребляемая мощность



0/0,7 r.p.m ▪ 4 x 11 kW



0 → 109 m/min ▪ 15 kW





RAIMONDI CRANES S.p.A.
Via Donatori Volontari del Sangue, 100
20004 Arluno Milan, Italy
T. +39 02 897 086 10
www.raimondi.co