

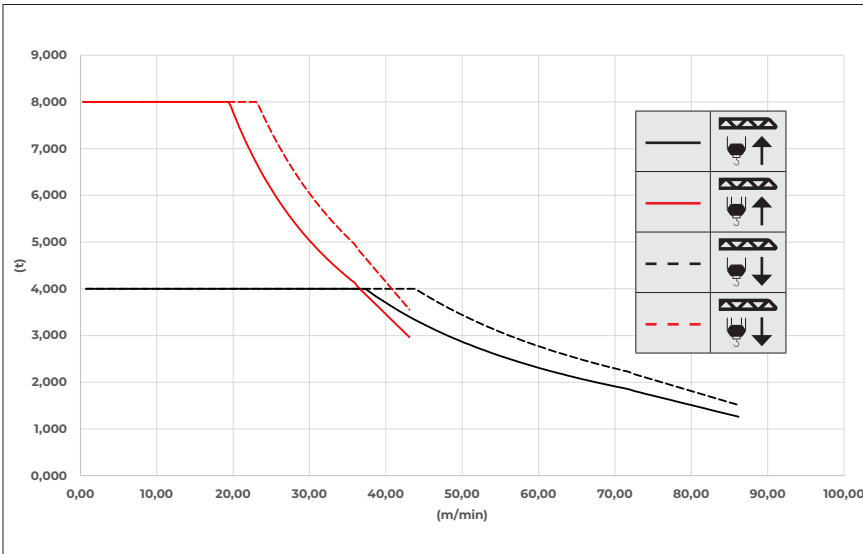




ID: A101T14708-000M - Rev. 02

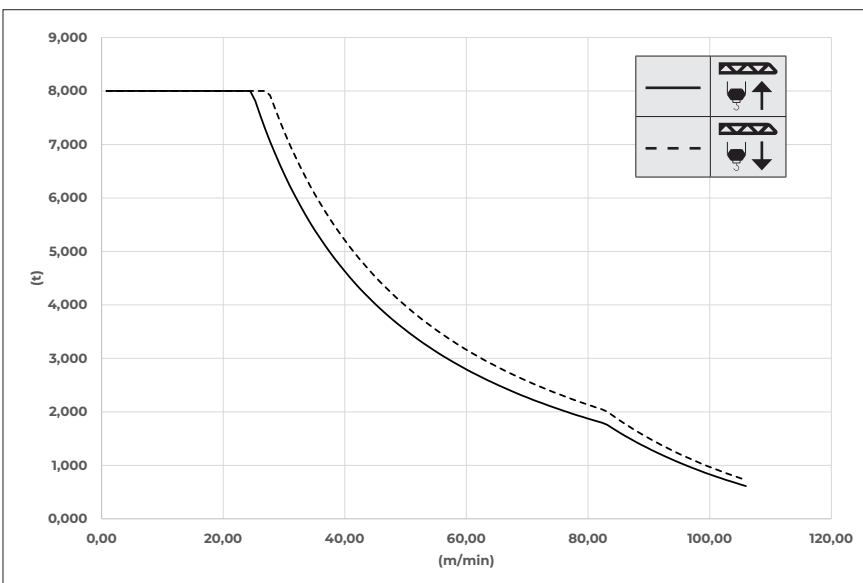


| | |
|---|---|
|  |  |
| 30 kW - 50 Hz | Ø 12 - 425 m |



| (Hz) | (t) | (t) | (m/min) | (m/min) | (t) | (t) | (m/min) | (m/min) |
|------|-------|-------|---------|---------|-------|-------|---------|---------|
| 1 | 4,000 | 8,000 | 0,72 | 0,36 | 4,000 | 8,000 | 0,718 | 0,359 |
| 10 | 4,000 | 8,000 | 7,18 | 3,59 | 4,000 | 8,000 | 7,182 | 3,591 |
| 20 | 4,000 | 8,000 | 14,36 | 7,18 | 4,000 | 8,000 | 14,364 | 7,182 |
| 30 | 4,000 | 8,000 | 21,55 | 10,77 | 4,000 | 8,000 | 21,546 | 10,773 |
| 40 | 4,000 | 8,000 | 28,73 | 14,36 | 4,000 | 8,000 | 28,728 | 14,364 |
| 50 | 4,000 | 8,000 | 35,91 | 17,95 | 4,000 | 8,000 | 35,910 | 17,955 |
| 60 | 3,401 | 7,188 | 43,09 | 21,55 | 4,000 | 8,000 | 43,091 | 21,546 |
| 70 | 2,848 | 6,096 | 50,27 | 25,14 | 3,418 | 7,315 | 50,273 | 25,137 |
| 80 | 2,433 | 5,277 | 57,46 | 28,73 | 2,920 | 6,332 | 57,455 | 28,728 |
| 90 | 2,110 | 4,639 | 64,64 | 32,32 | 2,533 | 5,567 | 64,637 | 32,319 |
| 100 | 1,852 | 4,129 | 71,82 | 35,91 | 2,223 | 4,955 | 71,819 | 35,910 |
| 110 | 1,551 | 3,535 | 79,00 | 39,50 | 1,862 | 4,242 | 79,001 | 39,501 |
| 120 | 1,262 | 2,963 | 86,18 | 43,09 | 1,514 | 3,555 | 86,183 | 43,091 |
| 130 | 0,972 | 2,390 | 93,36 | 46,68 | 1,166 | 2,869 | 93,365 | 46,682 |

| | |
|---|---|
|  |  |
| 37 kW - 23 Hz | Ø 16 - 620 m |



| (Hz) | (t) | (m/min) | (t) | (m/min) |
|------|-------|---------|-------|---------|
| 1 | 8,000 | 0,82 | 8,000 | 0,815 |
| 10 | 8,000 | 8,15 | 8,000 | 8,151 |
| 20 | 8,000 | 16,30 | 8,000 | 16,302 |
| 30 | 8,000 | 24,45 | 8,000 | 24,453 |
| 40 | 5,871 | 32,60 | 6,598 | 32,603 |
| 50 | 4,526 | 40,75 | 5,096 | 40,754 |
| 60 | 3,627 | 48,91 | 4,092 | 48,905 |
| 70 | 2,983 | 57,06 | 3,373 | 57,056 |
| 80 | 2,500 | 65,21 | 2,833 | 65,207 |
| 90 | 2,123 | 73,36 | 2,413 | 73,358 |
| 100 | 1,822 | 81,51 | 2,076 | 81,509 |
| 110 | 1,331 | 89,66 | 1,528 | 89,659 |
| 120 | 0,923 | 97,81 | 1,072 | 97,810 |
| 130 | 0,613 | 105,96 | 0,725 | 105,961 |



