

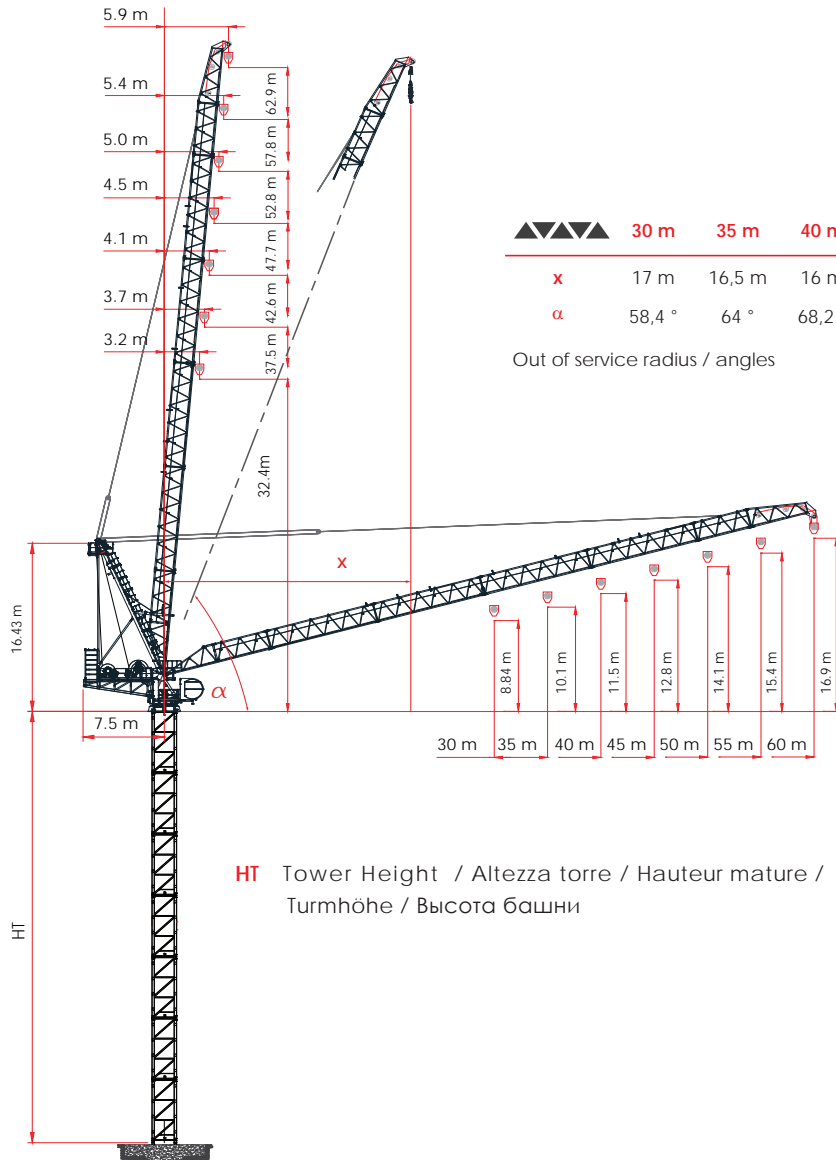


The Raimondi LR372's seven different jib length configurations, from 30 meters to 60 meters, satisfy all needs in terms of specific jobsite configurations

# Raimondi LR372 rev 01

# LR372

## 20t






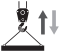












**HT** Tower Height / Altezza torre / Hauteur mature / Turmhöhe / Высота башни

- GR6L  
 HT 54,4 m C25  
 Embedded element
- GR6 / GR6L  
 HT 63,4 m C25  
 Embedded element
- GR6B / GR6 / GR6L  
 HT 72,4 m C25  
 Booster  
 Embedded element
- GR6L  
 HT 61,4 m C25  
 Base 8x8 m



2000/14/CE

EN 14439 C25 D25 - FEM 1.001

	IT	EN	F	DE	RU
	Altezza sotto gancio	Height under hook	Hauteur sous crochet	Höhe unter dem Haken	Высота под крюком
	Contrappesi	Counterjib ballast	Lest de contre-flèche	Gegenauslegerballast	Противовесы
	Freccia	Jib	Flèche	Ausleger	стрела
	Carico massimo	Max load	Charge maximale	Maximale Belastung	максимальная нагрузка
	Curva di carico Ultralift	Load diagram with ultralift control	Courbe de charges Ultralift	Lastkurven Ultralift	Кривой Груз Ultralift
	Altezza libera	Free Standing height	Hauteur libre	Freistehend	Свободностоящая высота
	Azionamenti	Mechanisms	Mécanismes	Antriebe	Приводы
	Velocità	Speed	Vitesse	Geschwindigkeit	скорость
	5 marce con velocità proporzionale al carico	5 step with speed proportional to the load	5 rapports avec une vitesse proportionnelle à la charge	5 Gang Geschwindigkeit proportional zum Last	Автоматический выбор скорости механизма подъема в зависимости от величины груза
	Tiro a 1 fune	One - rope pull	Tir à un cable	im1—fachen Seilstrangbetrieb	Однократная запасовка каната
	Tiro a 2 funi	Two - rope pull	Tir à deux cables	im2--fachen Seilstrangbetrieb	Двукратная запасовка тросов
	Capacità del tamburo	Drum capacity	Capacité du tambour	Fassungsvermögen der Trommel	Канатоемкость барабана
	Diametro fune	Rope diameter	Diamètre du cable	Seildurchmesser	Диаметр троса
	Rotazione	Slewing	Orientation	Schwenken	Поворот
	Braccio impennabile	Luffing jib	Flèche rélevable	Wippausleger	Стрела крана подъемный
	Traslazione	Travelling	Translation	Kranfahren	Перемещение крана

STANDARD



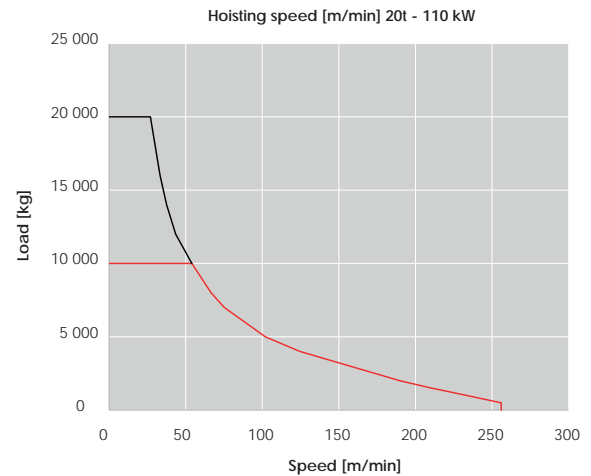
2000 / 14 / CE

20 t 150 hp 110 kW



400 V ± 5% 50 Hz

		m/min	kg	m/min	kg
880 m		5,4	10 000	2,7	20 000
		↓	↓	↓	↓
286 kVA		54	10 000	27	20 000
		↓	↓	↓	↓
Ø 24 mm		102	5 000	51	10 000
		↓	↓	↓	↓
		190	2 000	95	4 000
		↓	↓	↓	↓
		222	1 250	111	2 500
		↓	↓	↓	↓
		256	500	128	1 000



The speed at which loads are lifted or lowered is automatically regulated by the control system.

kVA Power required / Potenza richiesta / Puissance requise / Erforderliche Leistung / Потребляемая мощность



0 / 0,8 r.p.m. ▪ 2 x 15 kW / 14,5° / 85° 2,1 min ▪ 75 kW



LR372 - 10,0t UL - T1

Jib	30,0 m	35,0 m	40,0 m	45,0 m	50,0 m	55,0 m	60,0 m
MAX LOAD ▶	30 m	35 m	40 m	40 m	38 m	37 m	35 m
15	10000	10000	10000	10000	10000	10000	10000
<b>30</b>	<b>10000</b>	10000	10000	10000	10000	10000	10000
32		10000	10000	10000	10000	10000	10000
34		10000	10000	10000	10000	10000	10000
<b>35</b>		<b>10000</b>	10000	10000	10000	10000	10000
37			10000	10000	10000	10000	9416
39			10000	10000	9945	9260	8675
<b>40</b>			<b>10000</b>	10000	9580	8911	8332
42				9311	8902	8260	7694
44				8674	8283	7667	7113
<b>45</b>				<b>8370</b>	7992	7390	6842
49					6934	6389	5863
<b>50</b>					<b>6655</b>	6162	5642
54						5325	4834
<b>55</b>						<b>5115</b>	4649
<b>60</b>							<b>3795</b>

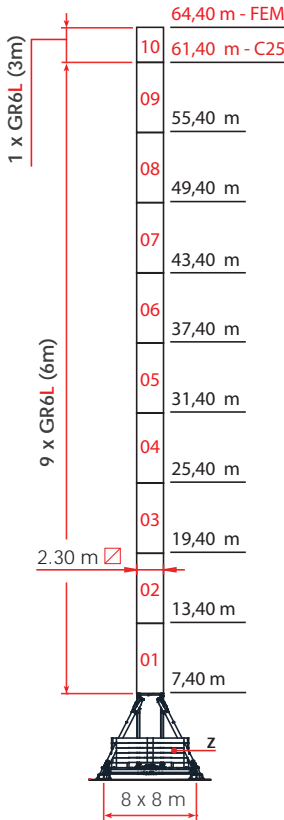


LR372 - 20,0t UL - T2

Jib	30,0 m	35,0 m	40,0 m	45,0 m	50,0 m	55,0 m	60,0 m
MAX LOAD ▶	22 m	22 m	23 m	23 m	22 m	23 m	26 m
15	20000	20000	20000	20000	20000	18000	15000
<b>30</b>	<b>14585</b>	14580	14217	14207	14168	13328	12674
32		13389	13067	13051	12986	12189	11555
34		12327	12045	12025	11943	11184	10568
<b>35</b>		<b>11660</b>	11575	11554	11465	10724	10116
37			10703	10684	10586	9879	9286
39			9903	9898	9796	9119	8541
<b>40</b>			<b>9790</b>	9532	9430	8767	8195
42				8846	8748	8113	7554
44				8208	8126	7517	6969
<b>45</b>				<b>8140</b>	7834	7238	6696
49					6770	6231	5711
<b>50</b>					<b>6490</b>	6003	5489
54						5161	4676
<b>55</b>						<b>4950</b>	4489
<b>60</b>							<b>3630</b>

**ULTRALIFT** If the crane is not equipped with Ultralift control, all intermediate loads are decreased by 10% / Senza il sistema Ultralift tutte le portate intermedie diminuiscono il carico del 10%

□ 2,3 m GR6L E



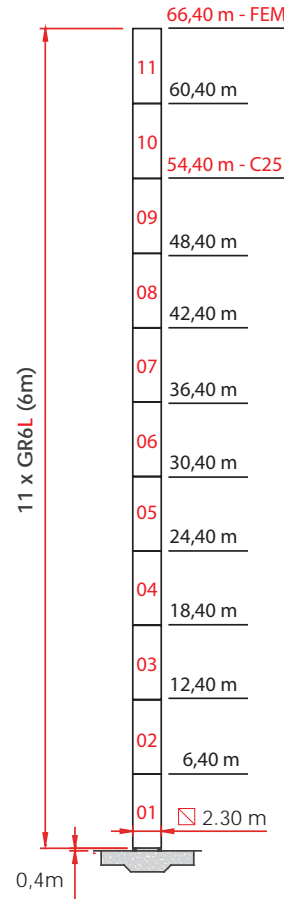
Base 8,0 x 8,0 m FEM 1.001

HT [m]	60m	55m	50m	45m	40m	35m	30m
64,4							196
61,4					196	186	166
58,4				196	176	156	146
55,4			186	176	156	136	126
52,4		176	166	146	136	116	106
49,4	176	156	146	126	116	96	86
43,4	136	116	96	86	76	66	56
37,4	96	86	56	46	46	46	46
31,4	66	56	46	46	46	46	46
25,4	46	46	46	46	46	46	46
19,4	46	46	46	46	46	46	46

Base 8,0 x 8,0 m EN14439 C25

HT [m]	60m	55m	50m	45m	40m	35m	30m
61,4							176
58,4					186	166	156
55,4				176	166	146	126
52,4		186	176	156	136	126	106
49,4	186	166	146	136	116	106	86
43,4	146	116	106	86	76	66	56
37,4	96	76	66	56	46	46	46
31,4	56	46	46	46	46	46	46
25,4	46	46	46	46	46	46	46
19,4	46	46	46	46	46	46	46

□ 2,3 m GR6L D1



FEM 1.001

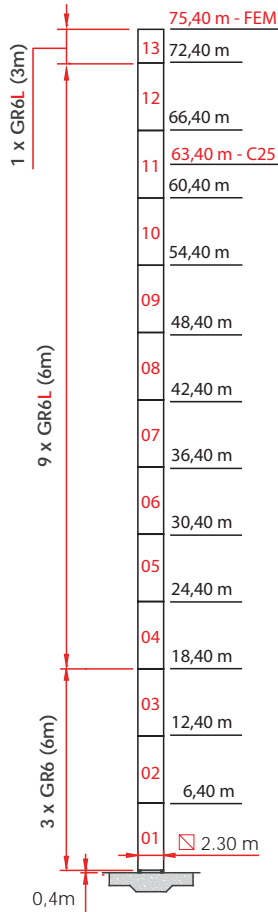
Jib [m]	HT [m]
30	66,4
35	63,4
40	60,4
45	57,4
50	54,4
55	51,4
60	48,4

EN 14439 C25

Jib [m]	HT [m]
30	54,4
35	54,4
40	51,4
45	48,4
50	48,4
55	45,4
60	42,4

Jib	Jib length	HT (m)	Total tower height	A	Base on concrete pads
B	Travelling base	D	Crane on embedded	E	Base on steel pads

▣ 2,3 m GR6 / GR6L **D2**



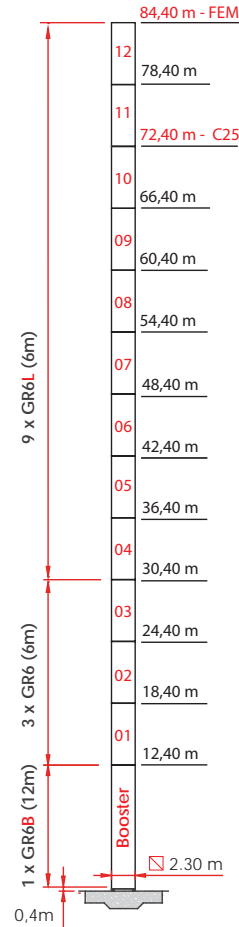
**FEM 1.001**

Jib [ m ]	HT [ m ]
30	75,4
35	72,4
40	72,4
45	69,4
50	66,4
55	63,4
60	60,4

**EN 14439 C25**

Jib [ m ]	HT [ m ]
30	63,4
35	63,4
40	60,4
45	57,4
50	57,4
55	54,4
60	51,4

▣ 2,3 m GR6B/GR6/GR6L **D3**



**FEM 1.001**

Jib [ m ]	HT [ m ]
30	84,4
35	81,4
40	78,4
45	78,4
50	75,4
55	75,4
60	72,4

**EN 14439 C25**

Jib [ m ]	HT [ m ]
30	72,4
35	72,4
40	69,4
45	66,4
50	66,4
55	63,4
60	60,4

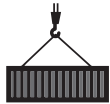
Jib	Jib length	HT (m)	Total tower height	A	Base on concrete pads
B	Travelling base	D	Crane on embedded	E	Base on steel pads



10 x 13,60 m

LR372 \_Jib 60 m ▪

Top part / Parte rotante / Partie tournante / Drehender Kranteil / Поворотная часть

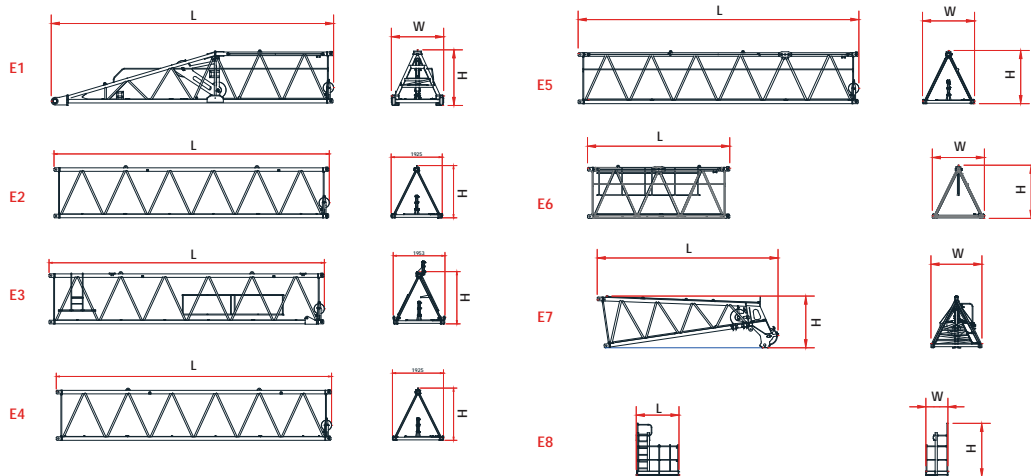


3 x 40 High cube

Included counter weight and cabin / Cabina e contrappesi inclusi / Cabine et contrepoids inclus / Kabine und Gegengewichts Blöcke – inbegriffen / Противовес включен - кабина

2 x 40 Open Top

6 x 40 Box



LR 372 - Jib Elements

DIMENSIONS [ m ]

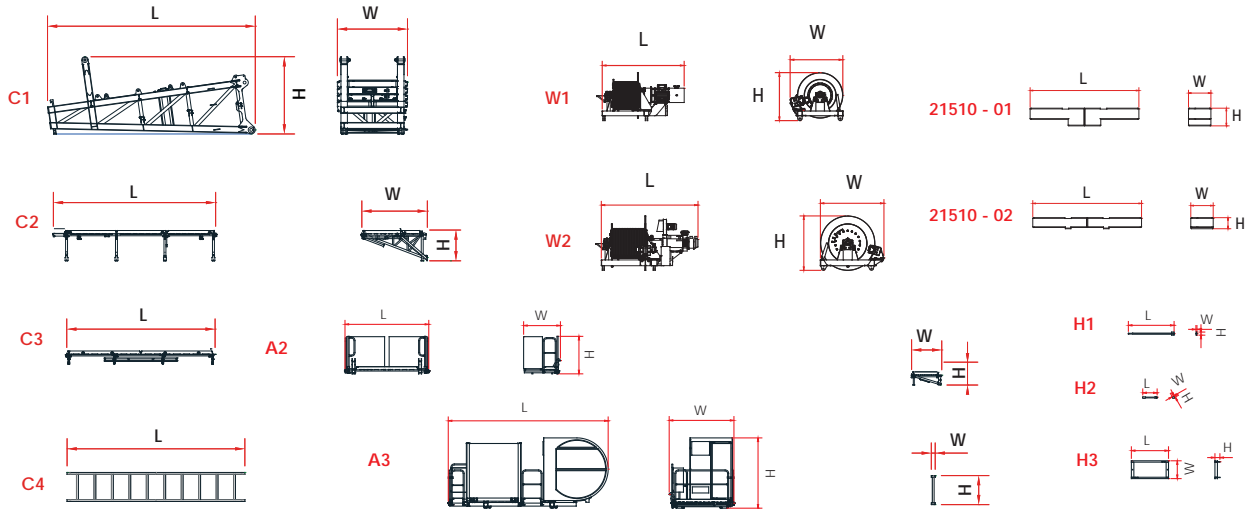
UNIT WEIGHT

UNIT	POS.	QUANTITY	L	W	H	Kg
Jib element*	E1	1	10443	1933	2061	3 053
Jib element*	E2	1	10383	1925	1969	1 480
Jib element*	E3	1	10383	1953	1969	1 466
Jib element*	E4	1	10383	1925	1969	1 369
Jib element*	E5	1	10383	1925	1969	1 500
Jib element*	E6	1	5260	1925	1969	910
Jib element*	E7	1	6700	1890	1920	1 410
Tip service balcony*	E8	1	1580	820	1980	150

\* With walkways and accessories

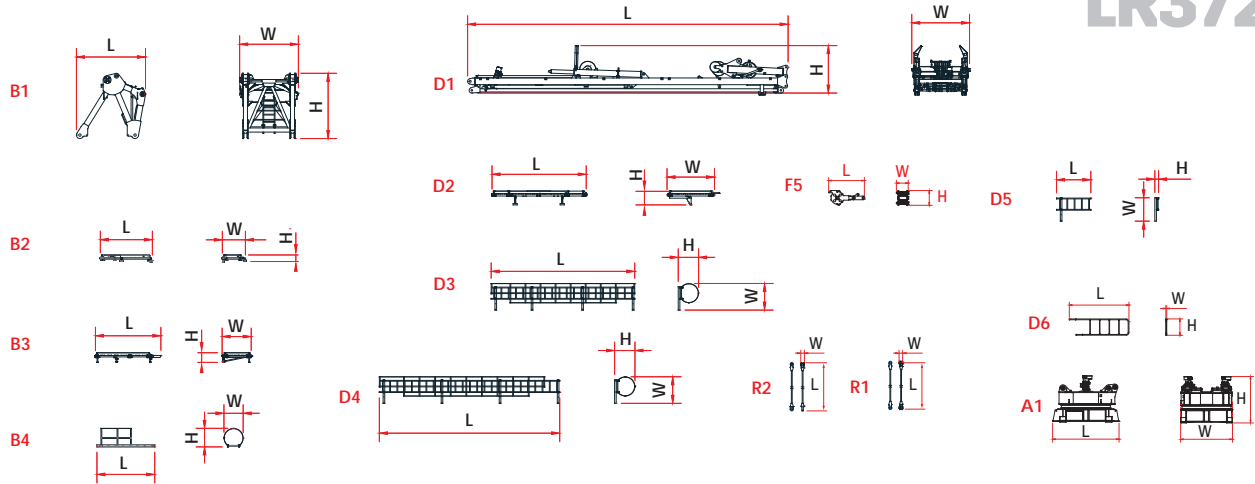
L (m)	Length of the element	H (m)	Height of the element	W (m)	Width of the element	Kg	Unit weight
-------	-----------------------	-------	-----------------------	-------	----------------------	----	-------------




**Counter-jib Elements**
**DIMENSIONS [ m ]**
**UNIT WEIGHT**

UNIT	POS.	QUANTITY	L	W	H	Kg
Counter-jib	C1	1	6450	2170	2400	4 450
Balcony (CAB side)	C2	1	5020	2050	940	560
Balcony (opposite CAB)	C3	1	4590	930	407	260
Counterweight access ladder	C4	2	2750	60	450	10
Luffing winch with rope (75 kW)	W1	1	2608	1600	1296	2 880
Hoisting winch with rope (110 kW)	W2	1	3434	2009	1657	5 062 + F
Base ballast block tie rods	H1	2	1 515	32	102	5
Ballast fixing extensions	H2	8	475	42	36	2
Ballast fixing frame	H3	1	1 230	590	164	40
Resistance platform	A2	1	2780	1225	1245	385
Cabin platform	A3	1	5300	2146	2325	1 990
Counter-weight	21510_01	25	5 000	1 030	810	6 600
Counter-weight	21510_02	26	5 000	1 030	510	5 200

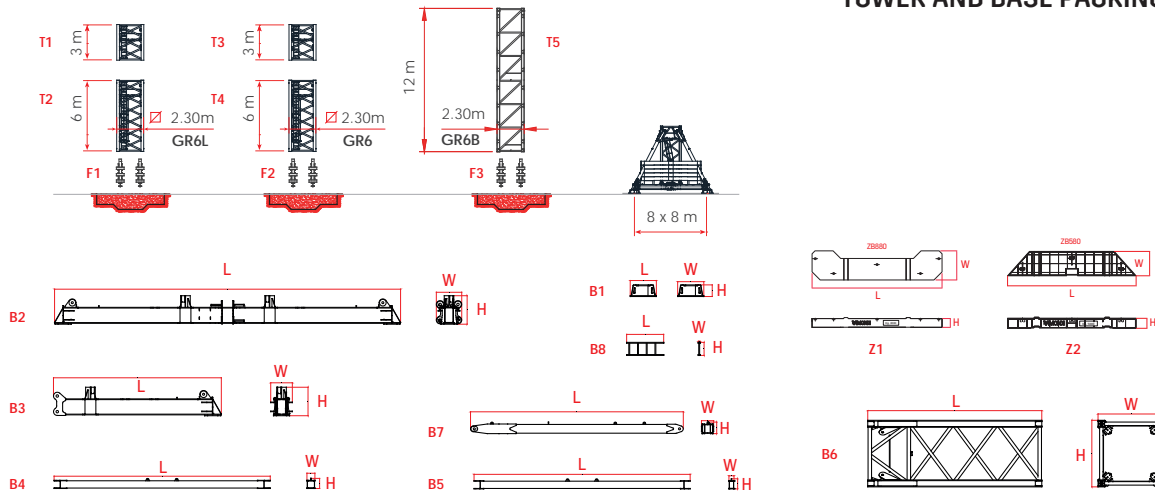
L (m)	Length of the element	H (m)	Height of the element	W (m)	Width of the element	Kg	Unit weight
-------	-----------------------	-------	-----------------------	-------	----------------------	----	-------------



## Upper part elements

UNIT	Upper part elements		DIMENSIONS [ m ]			UNIT WEIGHT
	POS.	QUANTITY	L	W	H	Kg
Slewing unit GR6L - GR5H	A1 A	1	2970	2320	2074	10 590
Slewing unit GR6L	A1 B	1	2970	2320	2074	10 230
A-Frame Support	B1	1	2570	2185	2430	3 157
Balcony (opposite CAB)	B2	1	1935	859	275	98
Balcony (CAB side)	B3	1	2435	1081	360	122
Ladder A3/B4	B4	1	2150	720	690	8
Cusp	D1	1	11925	2150	1770	6 460
Cusp balcony	D2	1	3505	1765	513	315
Upper ladder	D3	1	5340	990	760	59
Intermediate ladder	D4	1	6710	990	760	65
Lower ladder	D5	1	1275	870	140	12
Handrail	D6	1	2667	43	733	15
Tie - rod Connection	F1	1	1460	245	171	69
Long tie - rod - L=6000	F2	4	6200	96	160	177
Long tie - rod - L=2900	F3	3	3100	96	160	97
Long tie - rod - L=1600	F4	1	1800	96	160	63
Mobile sheave block for luffing rope	F5	1	1620	542	660	316
Auxiliary rope type A F/F	R1	2	9200	Ø30		57
Auxiliary rope type B M/F	R2	6	9200	Ø30		53

L (m)	Length of the element	H (m)	Height of the element	W (m)	Width of the element	Kg	Unit weight
-------	-----------------------	-------	-----------------------	-------	----------------------	----	-------------

**TOWER AND BASE PACKING LIST**


Tower 2,30 m and base package list

				DIMENSIONS [ m ]			UNIT WEIGHT	
UNIT		m	POS.	QUANTITY	L	W	H	Kg
Tower element	GR6L	3,0	T1	1	3,000	2,290	2,276	2 680
Tower element		6,0	T2	1	6,000	2,290	2,276	4 865
Tower element	GR6	3,0	T3	1				
Tower element		6,0	T4	1	6,000	2,340	2,318	5 920
Tower element	GR6B	12,0	T5	1	12,000	2,550	2,320	15 620
Foundation legs GR6L			F1	4	2,135	0,60	0,60	467 x 4
Foundation legs GR6			F2	4	2,515	0,80	0,80	810 x 4
Foundation legs GR6B			F3	4	2,525	0,80	0,80	960 x 4
Crossbase support			B1	4	0,900	900	400	352
Crossbase long beam			B2	1	11,915	875	980	3 415
Crossbase short beam			B3	2	5,780	745	980	1 625
Crossbase			B4	2	7,440	275	347	288
Crossbase			B5	2	7,440	174	347	468
Crossbase tower element			B6	1	5,990	2,300	2,300	5,428
Crossbase struts			B7	4	7,324	420	397	683
Crossbase access ladder			B8	1	1,275	60	45	10
Main ballast	ZB880		Z1	2	6,650	450	1,490	8 000
Ballast	ZB580		Z2	-	5,580	450	1,100	5 000

L (m)	Length of the element	H (m)	Height of the element	W (m)	Width of the element	Kg	Unit weight
-------	-----------------------	-------	-----------------------	-------	----------------------	----	-------------



RAIMONDI CRANES S.p.A.  
Via Donatori Volontari del Sangue, 100  
20004 Arluno Milan, Italy  
T. +39 02 897 086 10  
[www.raimondi.co](http://www.raimondi.co)  
[info@raimondicranes.com](mailto:info@raimondicranes.com)  
DATA SHEETS REV. 01.2019 / ADL



**The data presented in the 2019 Product Guide is subject to change without prior notice. Being an non-binding commercial document, the reader is required to consult instruction manuals for all technical information.** / I dati oggetto della presente scheda potrebbero subire

modifiche senza preavviso. Essendo un documento commerciale non vincolante si fa obbligo di consultare il manuale di istruzioni per tutte le informazioni tecniche. / Les informations données dans les fiches présentes peuvent subir des modifications sans préavis. Étant un document commercial non contraignant, il est nécessaire de consulter le manuel d'instructions pour toutes les informations techniques. / Die daten der vorliegenden blätter könnten ohne vorankündigung geändert werden. Unverbindliches Vertriebsdokument. Für technische Informationen, siehe die entspr chenden Anweisungen. / данные, указанные в настоящих спецификациях, могут изменяться без предварительного предупреждения. Этот коммерческий документ не является юридически обязательным. Для получения технической информации, см. соответствующие инструкции.