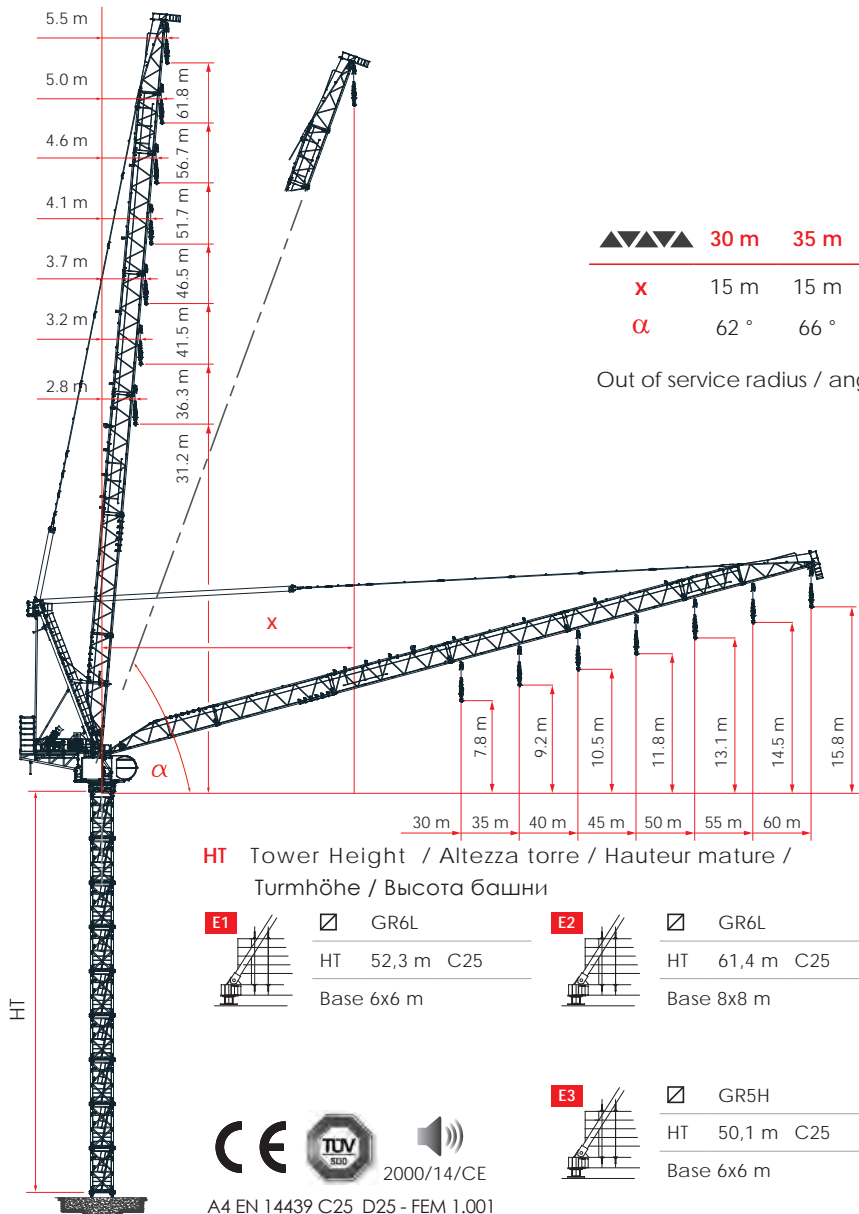




The Raimondi LR273 luffing jib crane boasts many optimizations including excellent load curve and big drum capacity, and is celebrated for its ease of use and efficient installation procedure

Raimondi LR273 rev 02



	30 m	35 m	40 m	45 m	50 m	55 m	60 m
x	15 m	15 m	15 m	16 m	17 m	19 m	21 m
α	62°	66°	69°	70°	71°	71°	70°

Out of service radius / angles





HT Tower Height / Altezza torre / Hauteur mature / Turmhöhe / Высота башни


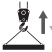



E1 GR6L
 HT 52,3 m C25
 Base 6x6 m



E2 GR6L
 HT 61,4 m C25
 Base 8x8 m



E3 GR5H
 HT 50,1 m C25
 Base 6x6 m

  
 2000/14/CE
 A4 EN 14439 C25 D25 - FEM 1.001

D1 	<input checked="" type="checkbox"/> GR6L HT 57,4 m C25 Embedded element
D2 	<input checked="" type="checkbox"/> GR6 / GR6L HT 63,4 m C25 Embedded element
D3 	<input checked="" type="checkbox"/> GR6B / GR6 / GR6L HT 72,4 m C25 Booster Embedded element
D4 	<input checked="" type="checkbox"/> GR5H HT 44,2 m C25 Embedded element



	IT	EN	F	DE	RU
	Altezza sotto gancio	Height under hook	Hauteur sous crochet	Höhe unter dem Haken	Высота под крюком
	Contrappesi	Counterjib ballast	Lest de contre-flèche	Gegenauslegerballast	Противовесы
	Freccia	Jib	Flèche	Ausleger	стрела
	Carico massimo	Max load	Charge maximale	Maximale Belastung	максимальная нагрузка
	Curva di carico Ultralift	Load diagram with ultralift control	Courbe de charges Ultralift	Lastkurven Ultralift	Кривой Груз Ultralift
	Altezza libera	Free Standing height	Hauteur libre	Freistehend	Свободностоящая высота
	Azionamenti	Mechanisms	Mécanismes	Antriebe	Приводы
	Velocità	Speed	Vitesse	Geschwindigkeit	скорость
	5 marce con velocità proporzionale al carico	5 step with speed proportional to the load	5 rapports avec une vitesse proportionnelle à la charge	5 Gang Geschwindigkeit proportional zum Last	Автоматический выбор скорости механизма подъема в зависимости от величины груза
	Tiro a 2 funi	Two - rope pull	Tir à deux cables	im2--fachen Seilstrangbetrieb	Двукратная запасовка тросов
	Tiro a 4 funi	Four - rope pull	Tir à quatre câbles	Zug an vier Seilen	Четырехкратная запасовка тросов
	Capacità del tamburo	Drum capacity	Capacité du tambour	Fassungsvermögen der Trommel	Канатоемкость барабана
	Diametro fune	Rope diameter	Diamètre du cable	Seildurchmesser	Диаметр троса
	Rotazione	Slewing	Orientation	Schwenken	Поворот
	Braccio impennabile	Luffing jib	Flèche rélevable	Wippausleger	Стрела крана подъемный
	Traslazione	Travelling	Translation	Kranfahren	Перемещение крана



	Jib	30 m	35 m	40 m	45 m	50 m	55 m	60 m
LR273 - 4,5t UL - T1	4,5t 	30 m	35 m	40 m	45 m	50 m	54,4 m	51,4 m
	20	4,50	4,50	4,50	4,50	4,50	4,50	4,50
	25	4,50	4,50	4,50	4,50	4,50	4,50	4,50
	27	4,50	4,50	4,50	4,50	4,50	4,50	4,50
	29	4,50	4,50	4,50	4,50	4,50	4,50	4,50
	30	4,50	4,50	4,50	4,50	4,50	4,50	4,50
	33		4,50	4,50	4,50	4,50	4,50	4,50
	35		4,50	4,50	4,50	4,50	4,50	4,50
	36			4,50	4,50	4,50	4,50	4,50
	38			4,50	4,50	4,50	4,50	4,50
	40			4,50	4,50	4,50	4,50	4,50
	41				4,50	4,50	4,50	4,50
	43				4,50	4,50	4,50	4,50
	45				4,50	4,50	4,50	4,50
	46					4,50	4,50	4,50
	48					4,50	4,50	4,50
	50					4,50	4,50	4,50
	54						4,50	4,08
	55						4,40	3,93
	58							3,50
60							3,19	

	Jib	30 m	35 m	40 m	45 m	50 m	55 m	60 m	
LR273 - 9,0t UL - T2	9,0t 	30 m	35 m	38,6 m	37,4 m	36,5 m	33,7 m	30 m	
	20	9,00	9,00	9,00	9,00	9,00	9,00	9,00	
	25	9,00	9,00	9,00	9,00	9,00	9,00	9,00	
	27	9,00	9,00	9,00	9,00	9,00	9,00	9,00	
	29	9,00	9,00	9,00	9,00	9,00	9,00	9,00	
	30	9,00	9,00	9,00	9,00	9,00	9,00	9,00	
	33		9,00	9,00	9,00	9,00	9,00	8,81	
	35		9,00	9,00	9,00	9,00	8,48	8,07	
	36			9,00	9,00	8,98	8,14	7,73	
	38				8,86	8,56	8,32	7,52	7,11
	40				8,20	7,94	7,72	6,96	6,54
	41					7,66	7,43	6,70	6,28
	43					7,12	6,91	6,22	5,79
	45					6,60	6,43	5,77	5,35
	46						6,20	5,56	5,14
	48						5,76	5,17	4,75
	50						5,34	4,80	4,38
	54							4,12	3,73
	55							3,96	3,57
	58								3,14
60								2,86	

ULTRALIFT

If the crane is not equipped with Ultralift control, all intermediate loads are decreased by 10% / Senza il sistema Ultralift tutte le portate intermedie diminuiscono il carico del 10%

	Jib	30 m	35 m	40 m	45 m	50 m	55 m	60 m
LR273 - 13.5t UL - T3	13,5t 	28,6 m	28,2 m	27,9 m	27 m	26,5 m	24,5 m	24,1 m
	20	13,50	13,50	13,50	13,50	13,50	13,50	13,50
	25	13,50	13,50	13,50	13,50	13,50	13,13	12,82
	27	13,50	13,50	13,50	13,50	13,50	11,89	11,55
	29	12,51	12,49	12,46	12,06	12,39	10,81	10,45
	30	11,94*	11,96	11,94	11,55	11,83	10,33	9,96
	33		10,54	10,54	10,18	10,37	9,04	8,66
	35		9,68*	9,73	9,39	9,54	8,30	7,91
	36			9,36	9,03	9,15	7,97	7,57
	38			8,65	8,36	8,45	7,34	6,94
	40			7,98*	7,74	7,81	6,78	6,37
	41				7,45	7,52	6,51	6,10
	43				6,90	6,70	6,02	5,61
	45				6,38*	6,21	5,57	5,16
	46					5,98	5,36	4,95
	48					5,54	4,96	4,55
	50					5,12*	4,59	4,18
	54						3,90	3,52
	55		* - 165 kg using double block				3,74*	3,36
	58							2,93
60							2,64*	

	Jib	30 m	35 m	40 m	45 m	50 m	55 m	60 m
LR273 - 18.0t UL - T4	MAX LOAD 	22,3 m	22 m	21,9 m	21 m	21 m	21,3 m	23,5 m
	20	18,00	18,00	18,00	18,00	18,00	16,00	13,50
	25	14,89	14,81	14,83	14,43	15,04	13,07	12,78
	27	13,55	13,49	13,49	13,10	13,54	11,81	11,49
	29	12,35	12,34	12,33	11,94	12,29	10,72	10,38
	30	11,77	11,81	11,80	11,42	11,73	10,23	9,88
	33		10,38	10,40	10,05	10,25	8,93	8,56
	35		9,51	9,58	9,25	9,41	8,19	7,81
	36			9,20	8,89	9,03	7,85	7,46
	38			8,49	8,21	8,31	7,21	6,82
	40			7,81	7,59	7,67	6,64	6,24
	41				7,30	7,37	6,38	5,98
	43				6,74	6,55	5,88	5,48
	45				6,22	6,06	5,43	5,02
	46					5,83	5,21	4,81
	48					5,38	4,81	4,41
	50					4,95	4,43	4,03
	54						3,74	3,36
	55						3,58	3,21
	58							2,76
60							2,48	




ULTRALIFT

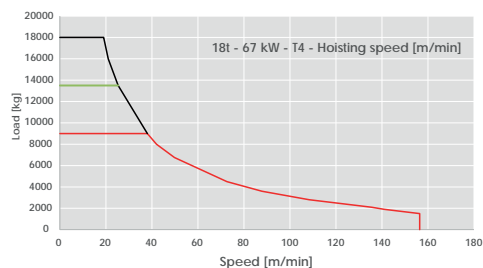
If the crane is not equipped with Ultralift control, all intermediate loads are decreased by 10% / Senza il sistema Ultralift tutte le portate intermedie diminuiscono il carico del 10%

400 V ± 5%


18 t
90 hp 67 kW

 2000 / 14 / CE

		m/min	t	m/min	t	m/min	t
 980	m	38	9,00	25,3	13,50	19	18,00
 258	kVA	72,6	4,50	48,4	6,75	36,3	9,00
 Ø 16	mm	108,4	2,80	72,3	4,20	54,2	5,60
		141	1,90	94,0	2,85	70,5	3,80
		156,4	1,50	104,3	2,25	78,2	3,00





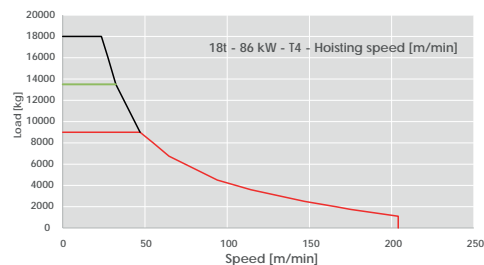
Speed automatically controlled by a current sensor / Velocità regolata automaticamente da sensore di corrente / Vitesse réglée automatiquement par capteur de courant / Automatisch durch Stromsensor geregelte geschwindigkeit / СКОРОСТЬ АВТОМАТИЧЕСКИ КОНТРОЛИРУЕТСЯ ДАТЧИКОМ НАПРЯЖЕНИЯ

400 V ± 5%


18 t
115 hp 86 kW

 2000 / 14 / CE

		m/min	t	m/min	t	m/min	t
 980	m	47	9,00	32,3	13,50	23,5	18,00
 278	kVA	94	4,50	64,6	6,75	47	9,00
 Ø 16	mm	147	2,50	98,0	3,75	73,5	5,00
		175	1,75	116,7	2,6	87,5	3,50
		204	1,10	136,0	1,65	102	2,20



Speed automatically controlled by a current sensor / Velocità regolata automaticamente da sensore di corrente / Vitesse réglée automatiquement par capteur de courant / Automatisch durch Stromsensor geregelte geschwindigkeit / СКОРОСТЬ АВТОМАТИЧЕСКИ КОНТРОЛИРУЕТСЯ ДАТЧИКОМ НАПРЯЖЕНИЯ



0 / 0,8 r.p.m. ▪ 2 x 11 kW



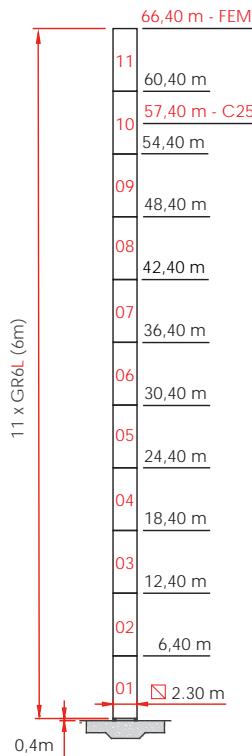
15° / 85° 1,8 min ▪ 75 kW



Contact Raimondi Cranes

Per la configurazione in T1 dei motori contattare la Raimondi Cranes / Contact Raimondi Cranes for the one-rope motor configuration / Pour la configuration avec tir à une corde des moteurs, contactez la Raimondi Cranes / Für konfigurationen mit ein einzelnes seil des motoren kontaktieren sie bitte Raimondi Cranes

2,3 m GR6L D1



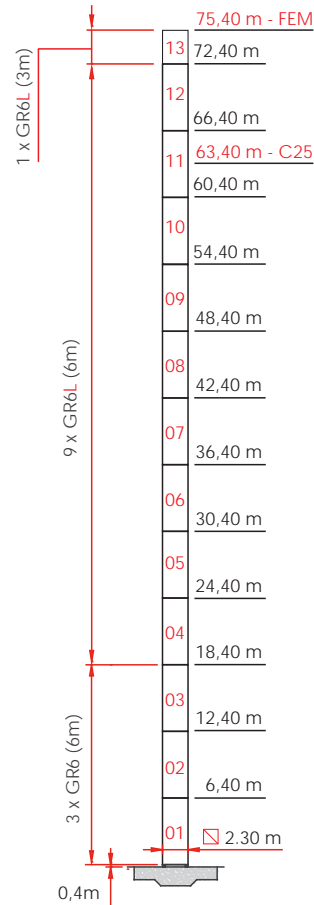
FEM 1.001

Jib [m]	HT [m]
30	66,4
35	63,4
40	60,4
45	60,4
50	57,4
55	54,4
60	54,4

EN 14439 C25

Jib [m]	HT [m]
30	57,4
35	54,4
40	54,4
45	51,4
50	51,4
55	48,4
60	45,4

2,3 m GR6 / GR6L D2



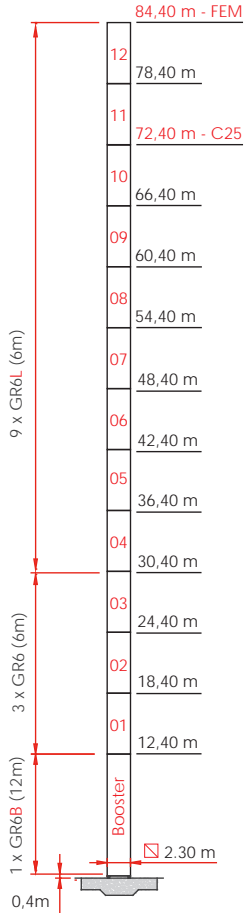
FEM 1.001

Jib [m]	HT [m]
30	75,4
35	75,4
40	72,4
45	72,4
50	69,4
55	66,4
60	66,4

EN 14439 C25

Jib [m]	HT [m]
30	63,4
35	63,4
40	63,4
45	60,4
50	57,4
55	57,4
60	54,4

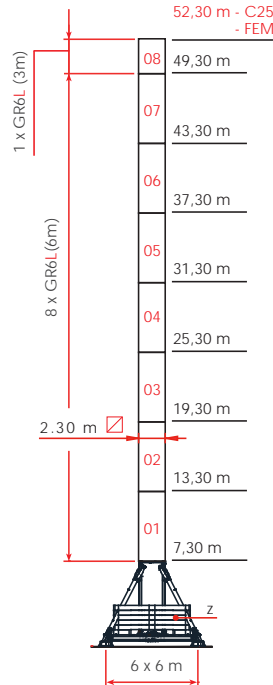
Jib	Jib length	HT (m)	Total tower height	A	Base on concrete pads
B	Travelling base	D	Crane on embedded	E	Base on steel pads

2,3 m GR6B/GR6/GR6L D3

FEM 1.001

Jib [m]	HT [m]
30	84,4
35	84,4
40	81,4
45	81,4
50	78,4
55	78,4
60	75,4

EN 14439 C25

Jib [m]	HT [m]
30	72,4
35	72,4
40	72,4
45	69,4
50	66,4
55	66,4
60	63,4

2,3 m GR6L E1

Base 6,0 x 6,0 m FEM 1.001

HT [m]	60m	55m	50m	45m	40m	35m	30m
	Z [t]						
52,3							196
49,3					188	180	172
46,3			188	180	164	156	148
43,3	196	180	164	156	140	132	124
37,3	148	132	116	108	100	92	84
31,3	100	92	92	76	76	68	60
25,3	68	68	68	60	60	60	60
19,3	60	60	60	60	60	60	60

Base 6,0 x 6,0 m EN14439 C25

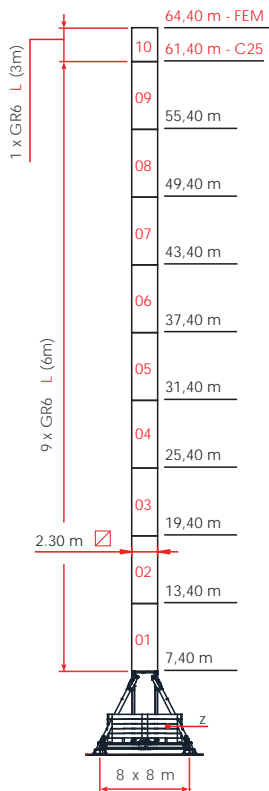
HT [m]	60m	55m	50m	45m	40m	35m	30m
	Z [t]						
52,3							196
49,3					196	180	172
46,3			196	180	164	156	148
43,3	188	164	156	140	132	124	
40,3	180	156	140	132	116	108	100
37,3	148	132	116	108	100	84	84
31,3	100	92	92	84	76	76	68
25,3	76	76	76	68	68	68	60
19,3	60	60	60	60	60	60	60

Jib Jib length
B Travelling base

HT (m) Total tower height
D Crane on embedded

A Base on concrete pads
E Base on steel pads

□ 2,3 m GR6L E2



Base 8,0 x 8,0 m		FEM 1.001					
HT	60m	55m	50m	45m	40m	35m	30m
[m]	Z [t]						
64,4							196
61,4					186	176	176
58,4				176	166	156	146
55,4			196	166	156	146	136
52,4		176	176	146	136	126	116
49,4	156	156	126	116	106	96	96
43,4	116	116	86	76	66	66	56
37,4	76	76	46	46	36	36	36
31,4	46	46	36	36	36	36	36
25,4	36	36	36	36	36	36	36
19,4	36	36	36	36	36	36	36

Base 8,0 x 8,0 m		EN14439 C25					
HT	60m	55m	50m	45m	40m	35m	30m
[m]	Z [t]						
61,4						196	186
58,4					196	176	166
55,4		196	176	166	156	146	136
52,4	186	176	156	146	136	126	116
49,4	166	146	136	126	106	106	96
43,4	116	106	86	86	76	66	56
37,4	76	66	56	46	36	36	36
31,4	46	36	36	36	36	36	36
25,4	36	36	36	36	36	36	36
19,4	36	36	36	36	36	36	36

Jib	Jib length	HT (m)	Total tower height	A	Base on concrete pads
B	Travelling base	D	Crane on embedded	E	Base on steel pads

▣ 1,95 m GR5H D4

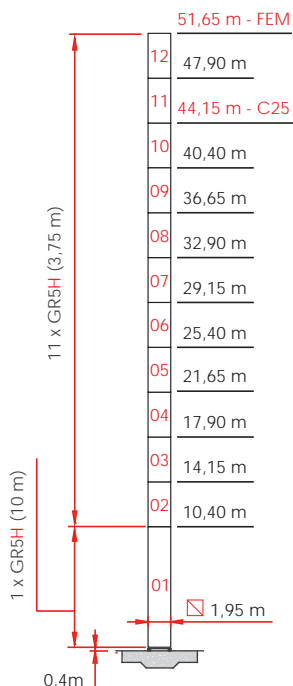
FEM 1.001

Jib [m]	HT [m]
30	51,7
35	51,7
40	47,9
45	47,9
50	44,2
55	44,2
60	44,2

▣ 1,95 m GR5H E3

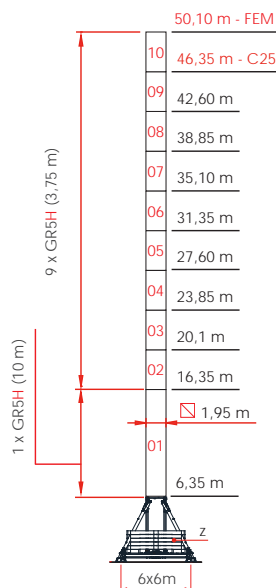
Base 6,0 x 6,0 m FEM 1.001

HT [m]	Z [t]					
	60m	55m	50m	45m	40m	35m 30m
50,1						196 188
46,4					188 172 164 156	
42,6			188 172 156 140 132 124			
38,9	180 156 140 124 116 108 100					
35,1	140 124 116 100 100 84 84					
31,4	108 100 100 84 84 76 68					
27,6	92 84 84 76 68 68 68					
23,9	76 76 76 60 60 68 68					
20,1	60 60 60 60 60 68 68					



EN 14439 C25

Jib [m]	HT [m]
30	44,2
35	44,2
40	44,2
45	40,4
50	40,4
55	36,7
60	36,7



Base 6,0 x 6,0 m EN14439 C25

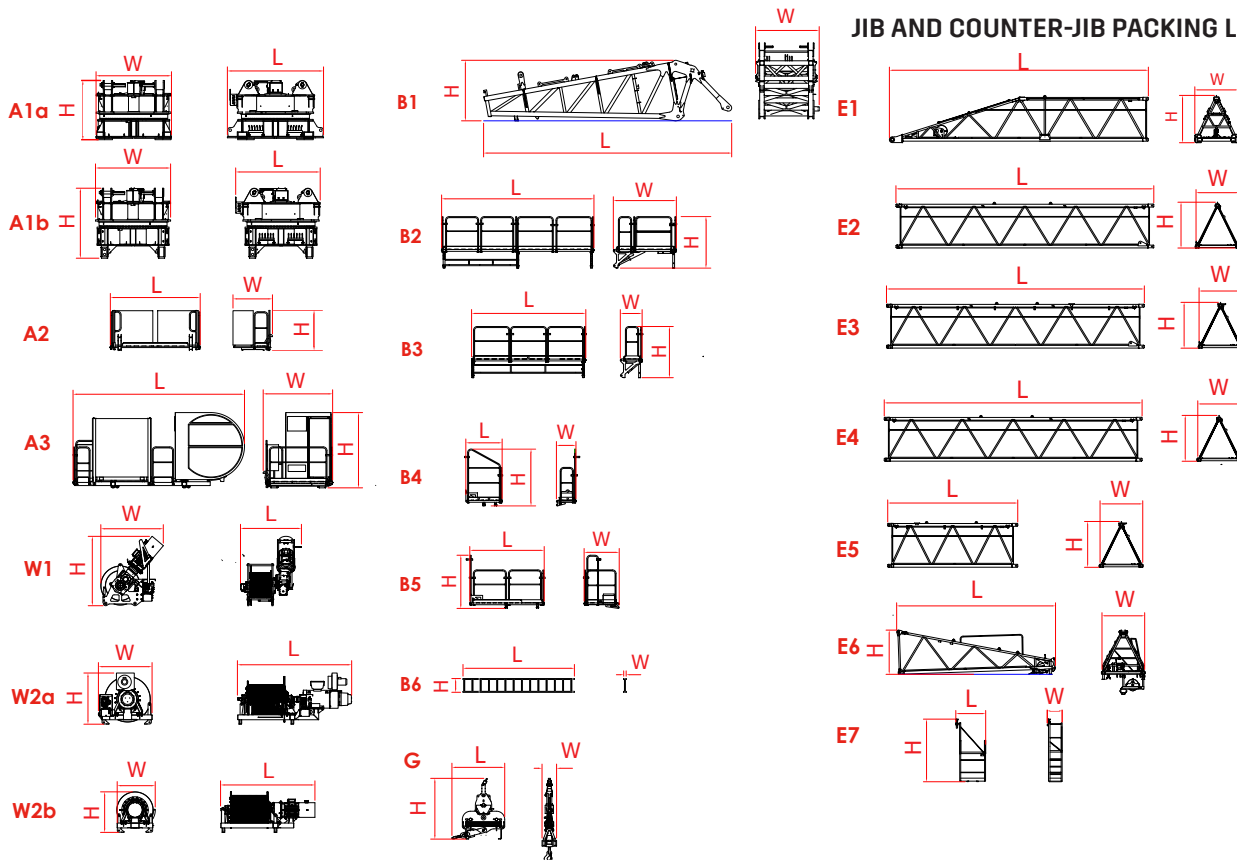
HT [m]	Z [t]					
	60m	55m	50m	45m	40m	35m 30m
46,4						196 180 172 156
42,6			188 164 156 140 132 124			
38,9	172 156 132 124 116 100 92					
35,1	140 124 116 100 100 84 84					
31,4	108 100 100 84 84 76 68					
27,6	84 84 84 76 76 60 60					
23,9	76 76 76 60 60 60 60					
20,1	60 60 60 60 60 60 60					

Jib Jib length
B Travelling base

HT (m) Total tower height
D Crane on embedded

A Base on concrete pads
E Base on steel pads

JIB AND COUNTER-JIB PACKING LIST



7 x 13,60 m
1 x 6,00 m

LR273 _Jib 60 m

Top part / Parte rotante / Partie tournante / Drehender Kranteil / Поворотная часть



4 x 40 High cube

2 x 40 Open Top

2 x 40 Box

Included counter weight and cabin / Cabina e contrappesi inclusi / Cabine et contrepoids incluses / Kabine und Gegengewichts Blöcke – inbegriffen / Противовес включен - кабина

L (m) Length of the element

H (m) Height of the element

W (m) Width of the element

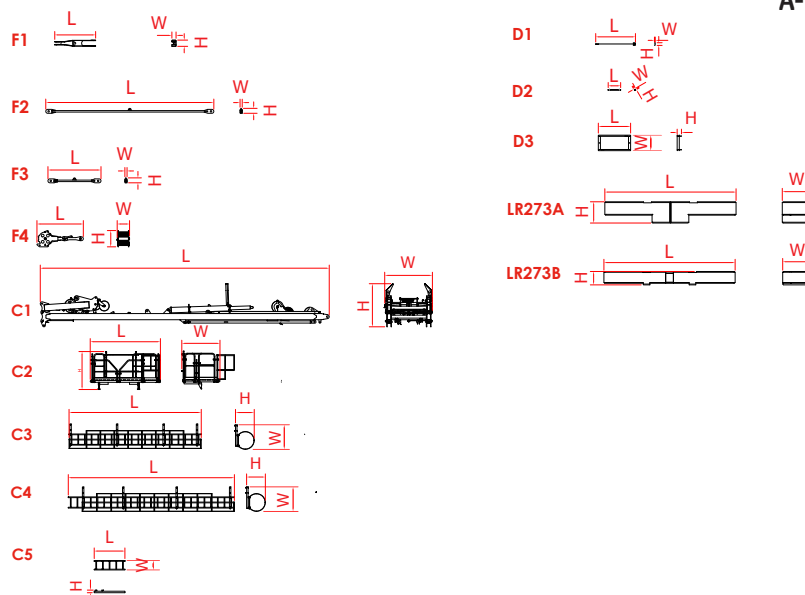
Kg Unit weight

JIB AND COUNTER-JIB PACKING LIST

Jib and Counter-jib Elements		DIMENSIONS [m]					
UNIT	POS.	QUANTITY	L	W	H	Kg	
Jib element n°1 *	E1	1	10,44	1,75	1,91	1820	
Jib element n°2 *	E2	1	\	1,72	1,85	1340	
Jib element n°3 *	E3	1	10,39	1,72	1,85	1165	
Jib element n°4 *	E4	2	10,39	1,72	1,85	1120	
Jib element n°5 *	E5	1	5,24	1,72	1,85	680	
Jib element n°6 *	E6	1	6,40	1,72	1,78	1042	
Tip Service balcony *	E7	1	1,20	0,60	2,52	108	
Counterjib	B1	1	8,13	2,09	1,98	5420	
Balcony (rear right side)	B2	1	4,99	2,07	1,69	386	
Balcony (rear left side)	B3	1	3,74	0,72	1,68	181	
Balcony (front right side)	B4	1	1,19	0,64	1,86	110	
Balcony (front left side)	B5	1	2,44	1,15	1,74	172	
Balcony Ladder	B6	1	3,65	0,08	0,45	15	
Luffing winch with rope	W1	1	1,88	1,92	2,14	2791	
Hoisting winch - 86kW	W2a	1	3,52	1,65	1,58	3340 + rope	
Hoisting winch - 67kW	W2b	1	2,91	1,17	1,25	2650 + rope	
Slewing unit GR6L / GR5H	A1a	1	2,97	2,33	1,83	8215	
Slewing unit GR5H	A1b	1	2,61	2,32	2,16	8982	
Balcony (CAB side)	A2	1	2,78	1,23	1,25	385	
Balcony (opposite CAB side)	A3	1	5,30	2,15	2,33	1990	
Hook block	G	1	1,60	0,44	1,84	795	

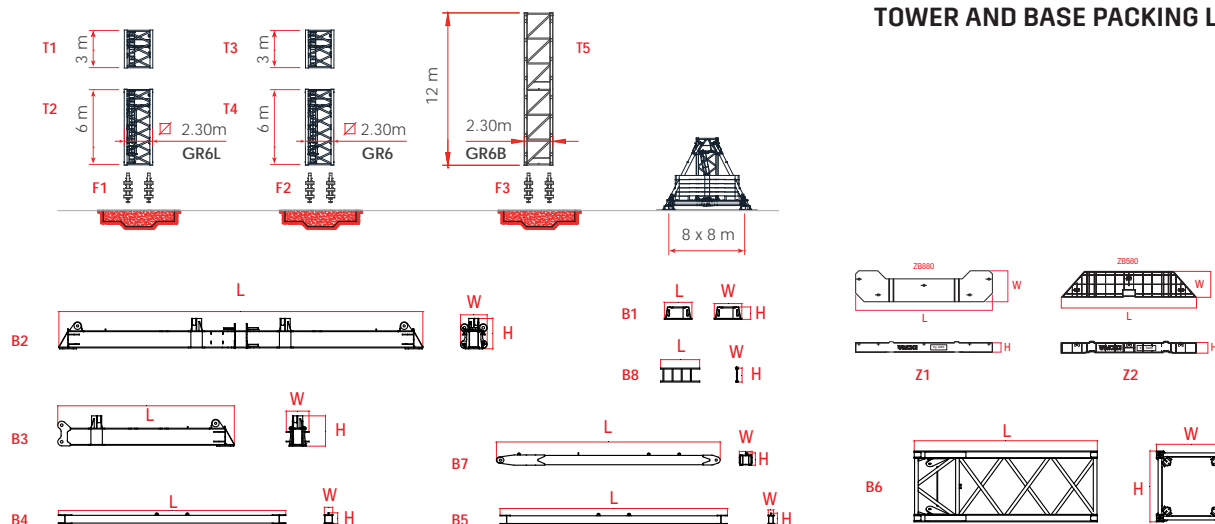
* With platform and accessories

A-FRAME PACKING LIST



A-Frame Elements		DIMENSIONS [m]				UNIT WEIGHT
UNIT	POS.	QUANTITY	L	W	H	Kg
A- frame	C1	1	11,68	1,93	1,75	5000
A- frame balcony	C2	1	2,84	1,55	1,54	212
A- frame top ladder	C3	1	5,34	0,99	0,76	62
A- frame bottom ladder	C4	1	6,71	0,99	0,76	70
Removable ladder	C5	1	1,24	0,38	0,11	3
Tie	F1	1	1,51	0,15	0,23	51
Long tie rod	F2	5	6,21	0,08	0,18	130
Short tie rod	F3	3	1,96	0,08	0,18	50
Mobile sheave block for luffing rope	F4	1	1,72	0,46	0,60	225
Base ballst block tie rods	D1	2	1,52	0,03	0,10	5
Ballast fixing extensions	D2	8	0,48	0,04	0,04	2
Ballast fixing frame	D3	1	1,23	0,59	0,16	40
Bottom Counterweight	LR273A	1	5,00	1,03	0,81	6600
Upper Counterweight	LR273B	5	5,00	1,03	0,51	5200

TOWER AND BASE PACKING LIST



Tower 2,30 m and base package list

DIMENSIONS [m]

UNIT WEIGHT

UNIT	POS.	QUANTITY	L	W	H	Kg
Tower element GR6L	T1	1	3,000	2,290	2,276	2 680
Tower element GR6L	T2	1	6,000	2,290	2,276	4 865
Tower element GR6	T3	1	3,000	2,340	2,318	3 260
Tower element GR6	T4	1	6,000	2,340	2,318	5 920
Tower element GR6B	T5	1	12,000	2,550	2,320	15 620
Foundation legs GR6L		4	2,135	0,60	0,60	467
Foundation legs GR6		4	2,515	0,80	0,80	810
Foundation legs GR6B		4	2,525	0,80	0,80	960
Crossbase support	B1	4	0,900	0,900	0,400	352
Crossbase long beam	B2	1	11,915	0,875	0,980	3 415
Crossbase short beam	B3	2	5,780	0,745	0,980	1 625
Crossbase traverse	B4	2	7,440	0,275	0,347	288
Crossbase traverse	B5	2	7,440	0,174	0,347	468
Crossbase tower element	B6	1	5,990	2,300	2,300	5,428
Crossbase struts	B7	4	7,324	0,420	0,397	683
Crossbase access ladder	B8	1	1,275	0,060	0,045	10
Main ballast ZB880	Z1	2	6,650	0,450	1,490	8 000
Ballast ZB580	Z2	-	5,580	0,450	1,100	5 000





RAIMONDI CRANES S.p.A.
Via Donatori Volontari del Sangue, 100
20004 Arluno Milan, Italy
T. +39 02 897 086 10
www.raimondi.co
info@raimondicranes.com
DATA SHEETS REV. 02.2019 / ADL



The data presented in the 2019 Product Guide is subject to change without prior notice. Being an non-binding commercial document, the reader is required to consult instruction manuals for all technical information. / I dati oggetto della presente scheda potrebbero subire

modifiche senza preavviso. Essendo un documento commerciale non vincolante si fa obbligo di consultare il manuale di istruzioni per tutte le informazioni tecniche. / Les informations données dans les fiches présentes peuvent subir des modifications sans préavis. Étant un document commercial non contraignant, il est nécessaire de consulter le manuel d'instructions pour toutes les informations techniques. / Die daten der vorliegenden blätter könnten ohne vorankündigung geändert werden. Unverbindliches Vertriebsdokument. Für technische Informationen, siehe die entspr chenden Anweisungen. / данные, указанные в настоящих спецификациях, могут изменяться без пред варительного предупреждения. Этот коммерческий документ не является юридически обязательным. Для получения технической информации, см. соответствующие инструкции.