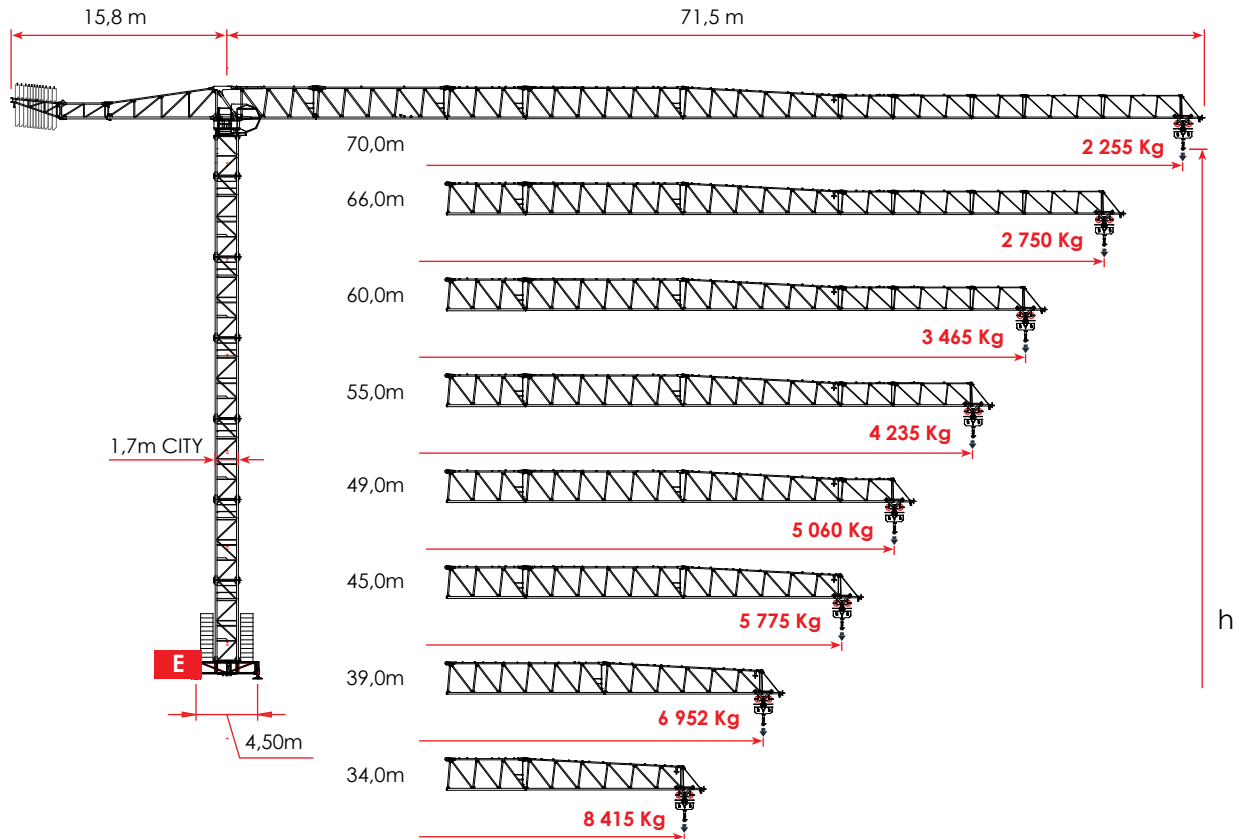


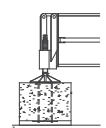
The Raimondi MRT234
topless tower crane
erected in Milan, Italy



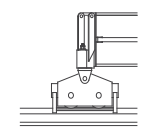
 **RAIMONDI**® MRT234
SINCE 1863



D -
 h 37,5 m C25
 h 37,5 m D25
 h 40,4 m FEM 1.001

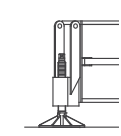


A 4,5 x 4,5 m
 h 39,3 m C25
 h 39,3 m D25
 h 42,2 m FEM 1.001

















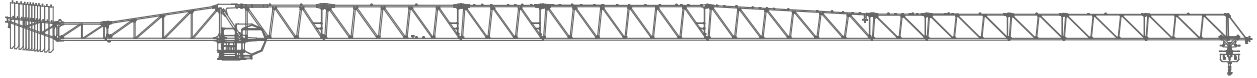
B 4,5 x 4,5 m
 h 39,1 m C25
 h 39,1 m D25
 h 42,0 m FEM 1.001




  
 2000/14/CE
 A4 EN 14439 C25 D25 - FEM 1.001



E 4,5 x 4,5 m
 h 38,5 m C25
 h 38,5 m D25
 h 41,4 m FEM 1.001

	IT	EN	F	DE	RU
	Altezza sotto gancio	Height under hook	Hauteur sous crochet	Höhe unter dem Haken	Высота под крюком
	Contrappesi	Counter weight jib ballast	Lest de contre-flèche	Gegenauslegerballast	Противовесы
	Freccia	Jib	Flèche	Kranarm	стрела крана
	Carico massimo	Max load	Charge maximale	Maximale Belastung	максимальная нагрузка
	Curva di carico Ultralift	Load diagrams with ultralift control	Courbes de charges Ultralift	Lastkurven Ultralift	Кривой Груз Ultralift
	Altezza libera	Free Standing	Hauteur libre	Freistehend	Свободностоящая высота
	Azionamenti	Mechanisms	Mécanismes	Antriebe	Приводы
	Velocità	Speed	Vitesse	Geschwindigkeit	скорость
4* - 5*	Marce con velocità proporzionale al carico	5 step with speed proportional to the load	5 rapports avec une vitesse proportionnelle à la charge	5 Gang Geschwindigkeit proportional zum Last	Автоматический выбор скорости механизма подъема в зависимости от величины груза
	Tiro a 2 funi	Two - rope pull	Tir à deux câbles	Zug an zwei Seilen	Двукратная запасовка тросов
	Tiro a 4 funi	Four - rope pull	Tir à quatre câbles	Zug an vier Seilen	Четырехкратная запасовка тросов
	Totale metri fune tamburo	Total meters rope drum	Total des mètres de corde du tambour	Total Meter Seil Trommel	Запас троса на барабане в метрах
	Diametro fune	Rope diameter	Diamètre du câble	Seildurchmesser	Диаметр троса
	Rotazione	Slewing	Orientation	Schwenken	Поворот
	Carrello	Trolley	Chariot	Katzfahnen	Тележка



		MAX 	28 m	34,0 m	39,0 m	45,0 m	49,0 m	55,0 m	60,0 m	66,0 m	70,0 m
kg	m	12,0 t									
25 210	70	18,4 m	7 376	5 852	4 947	4 132	3 701	3 173	2 816	2 459	2 255
23 955	66	19,8 m	8 074	6 424	5 444	4 561	4 095	3 524	3 137	2 750	
23 955	60	21,3 m	8 788	7 009	5 953	5 001	4 498	3 883	3 465		
23 955	55	22,8 m	9 489	7 584	6 453	5 433	4 894	4 235			
22 085	49	23,4 m	9 783	7 825	6 662	5 614	5 060				
20 830	45	23,9 m	10 044	8 039	6 848	5 775					
17 635	39	24,2 m	10 190	8 158	6 952						
15 765	34	24,9 m	10 503	8 415							
13 220	28	25,2 m	10 670								

12,0 t 50 hp 37 kW

STEP



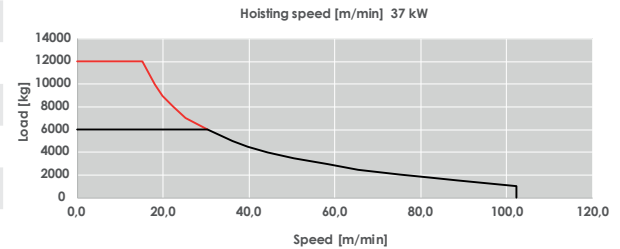
400 V ± 5% 50 Hz



2000 / 14 / CE



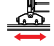
 330 m
 85 kVA
 Ø 14 mm


	m/min	kg	m/min	kg
1	4,5	12 000	9	6 000
2	10,5	12 000	21	6 000
3	15,5	12 000	31	6 000
4	↓	↓	↓	↓
5	30	6 000	60	3 000
5*	52	2 000	104	1 000




kVA Power required / Potenza richiesta / Puissance requise / Erforderliche Leistung / Потребляемая мощность

* Progressive speed automatically adjusted by the control system / Velocità progressiva regolata automaticamente dal sistema di controllo / Vitesse progressive ajustée automatiquement par le système de contrôle / Progressive Geschwindigkeit automatisch durch das Steuersystem eingestellt.

 0,26/0,48/0,8 min⁻¹ • 2 x 80 Nm /  0 → 45 → 108 (°) m/min • 6,6 kW /  20 m/min • 2 x 4 kW




 400 V ± 5% 50 Hz

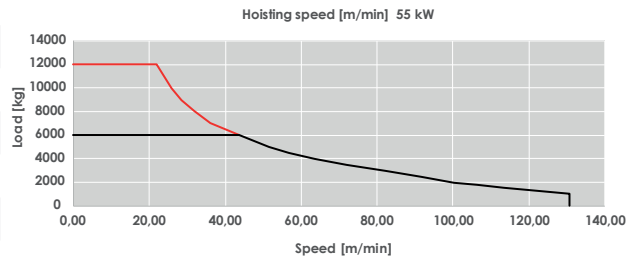
 2000 / 14 / CE

12,0 t 75 hp 55 kW

STEP



		m/min	kg	m/min	kg
 702 m	1	4,5	12 000	9	6 000
 115 kVA	2	14	12 000	28	6 000
 Ø 14 mm	3	22	12 000	44	6 000
	4	↓	↓	↓	↓
	5	42,5	6 000	85	3 000
	5*	60,0	2 000	120	1 000



kVA Power required / Potenza richiesta / Puissance requise / Erforderliche Leistung / Потребляемая мощность

* **Progressive speed automatically adjusted by the control system** / Velocità progressiva regolata automaticamente dal sistema di controllo / Vitesse progressive ajustée automatiquement par le système de contrôle / Progressive Geschwindigkeit automatisch durch das Steuersystem eingestellt.


 0,26/0,48/0,8 min⁻¹ • 2 x 80 Nm /


0 → 45 → 108 (°) m/min • 6,6 kW /


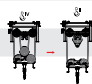


20 m/min • 2 x 4 kW

MRT234

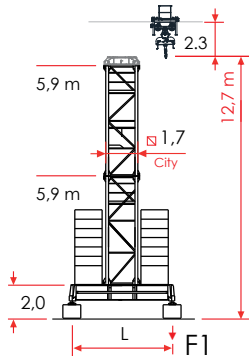


MRT234 - 12,0t

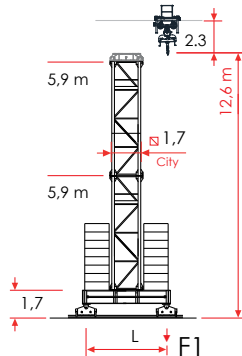
JIB	28,0 m	34,0 m	39,0 m	45,0 m	49,0 m	55,0 m	60,0 m	66,0 m	70,0 m
— ▶	25,2 m	24,9 m	24,2 m	23,9 m	23,4 m	22,8 m	21,3 m	19,8 m	18,4 m
18	12 000	12 000	12 000	12 000	12 000	12 000	12 000	12 000	12 000
19	12 000	12 000	12 000	12 000	12 000	12 000	12 000	12 000	11 541
21	12 000	12 000	12 000	12 000	12 000	12 000	12 000	11 235	10 295
22	12 000	12 000	12 000	12 000	12 000	12 000	11 572	10 655	9 760
23	12 000	12 000	12 000	12 000	12 000	11 863	11 003	10 128	9 274
24	12 000	12 000	12 000	11 957	11 650	11 306	10 484	9 647	8 829
26	11 600	11 420	11 082	10 925	10 642	10 326	9 569	8 798	8 045
28	10 670	10 503	10 190	10 044	9 783	9 489	8 788	8 074	7 376
30		9 712	9 420	9 284	9 041	8 767	8 114	7 448	6 798
32		9 022	8 749	8 622	8 394	8 138	7 526	6 903	6 295
34		8 415	8 158	8 039	7 825	7 584	7 009	6 424	5 852
36			7 635	7 522	7 320	7 093	6 551	5 999	5 459
38			7 167	7 061	6 870	6 655	6 142	5 619	5 109
39			6 952	6 848	6 662	6 453	5 953	5 444	4 947
42				6 273	6 100	5 906	5 443	4 971	4 510
44				5 933	5 768	5 584	5 142	4 692	4 252
45				5 775	5 614	5 433	5 001	4 561	4 132
46					5 466	5 290	4 867	4 437	4 017
48					5 190	5 021	4 616	4 204	3 802
49					5 060	4 894	4 498	4 095	3 701
50						4 773	4 385	3 990	3 604
53						4 438	4 072	3 700	3 336
54						4 335	3 976	3 610	3 253
55						4 235	3 883	3 524	3 173
56							3 793	3 441	3 097
57							3 707	3 361	3 023
58							3 623	3 283	2 951
59							3 543	3 209	2 882
60							3 465	3 137	2 816
63								2 934	2 629
64								2 871	2 570
65								2 809	2 513
66		+100Kg						2 750	2 459
68									2 354
70									2 255

ULTRALIFT If the crane is not equipped with Ultralift control, all intermediate loads are decreased by 10% / Senza il sistema Ultralift tutte le portate intermedie diminuiscono il carico del 10% / Les charges intermediaires sont diminuées de 10% si la grue n'est pas équipé d'un controle Ultralift. / Mit dem ULTRALIFT-System erhöhen alle Zwischenbelastbarkeiten die Last um 10% / Без ULTRALIFT промежуточный вес уменьшается на 10%.

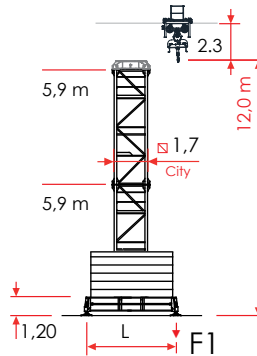
□ 1,7 m L = 4,5 (m)

A


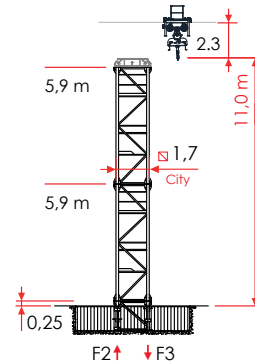
□ 1,7 m L = 4,5 (m)

B


□ 1,7 m L = 4,5 (m)

E


□ 1,7 m

D

A

□ 1,7 m

L = 4,5 m



EN 14439 - C25



EN 14439 - D25



FEM 1.001

ΔH (m) H (m) Z** (t) F1 (kN)






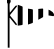

ΔH (m) H (m) Z** (t) F1 (kN)








ΔH (m) H (m) Z** (t) F1 (kN)

7	-	-	-	-	7	-	-	-	-	7	-	-	-	-
6	-	-	-	-	6	-	-	-	-	6	2,95 m	42,2	113,9	829
5	2,95 m	39,3	113,9	800	5	2,95 m	39,3	113,9	800	5	2,95 m	39,3	103,7	780
4	5,9 m	36,3	103,7	753	4	5,9 m	36,3	103,7	753	4	5,90 m	36,3	93,5	733
3	5,9 m	30,4	93,5	675	3	5,9 m	30,4	93,5	675	3	5,90 m	30,4	83,3	671
2	5,9 m	24,5	83,3	633	2	5,9 m	24,5	83,3	633	2	5,90 m	24,5	83,3	639
+1	5,9 m	18,6	83,3	617	+1	5,9 m	18,6	83,3	617	+1	5,90 m	18,6	83,3	611

A	Base on concrete pads	Base su zatteroni	Grue sur blocs d'appui	Kran auf Stützblöcken	Кран на опорных блоках
B	Travelling base	Base traslante	Grue à traslation	Fahrbarer Kran	Кран передвижной
E	Base on steel pads	Base con piedi regolabili	Grue sur pieds réglables	Kran auf verstellbaren Füßen	Кран на регулируемых лапах
D	Crane on embedded	Gru su tronchetto	Grue sur plinthe	Kran auf Fundamentplatte	Кран на фундаменте

STANDARD 1,7 CITY - 12t

B  1,7 m					L = 4,5 m									
  EN 14439 - C25					  EN 14439 - D25					  FEM 1.001				
ΔH (m)	H (m)	Z** (t)	F1 (kN)		ΔH (m)	H (m)	Z** (t)	F1 (kN)		ΔH (m)	H (m)	Z** (t)	F1 (kN)	
7	-	-	-	-	7	-	-	-	-	7	-	-	-	-
6	-	-	-	-	6	-	-	-	-	6	2,95 m	42,0	102,0	819
5	2,95 m	39,1	112,2	803	5	2,95 m	39,1	122,4	803	5	2,95 m	39,1	102,0	794
4	5,9 m	36,2	102,0	755	4	5,9 m	36,2	102,0	755	4	5,90 m	36,2	91,8	736
3	5,9 m	30,3	91,8	677	3	5,9 m	30,3	91,8	693	3	5,90 m	30,3	91,8	699
2	5,9 m	24,4	81,6	636	2	5,9 m	24,4	81,6	636	2	5,90 m	24,4	81,6	650
+1	5,9 m	18,5	71,4	603	+1	5,9 m	18,5	81,6	616	+1	5,90 m	18,5	71,4	598

E  1,7 m					L = 4,5 m									
  EN 14439 - C25					  EN 14439 - D25					  FEM 1.001				
ΔH (m)	H (m)	Z** (t)	F1 (kN)		ΔH (m)	H (m)	Z** (t)	F1 (kN)		ΔH (m)	H (m)	Z** (t)	F1 (kN)	
7	-	-	-	-	7	-	-	-	-	7	-	-	-	-
6	-	-	-	-	6	-	-	-	-	6	2,95 m	41,4	102,0	809
5	2,95 m	38,5	112,2	794	5	2,95 m	38,5	122,4	794	5	2,95 m	38,5	102,0	785
4	5,9 m	35,6	102,0	746	4	5,9 m	35,6	102,0	746	4	5,90 m	35,6	91,8	727
3	5,9 m	29,7	91,8	669	3	5,9 m	29,7	91,8	685	3	5,90 m	29,7	91,8	690
2	5,9 m	23,8	81,6	628	2	5,9 m	23,8	81,6	628	2	5,90 m	23,8	81,6	641
+1	5,9 m	17,9	71,4	620	+1	5,9 m	17,9	71,4	620	+1	5,90 m	17,9	71,4	591

Z**



Comply with the specified ballast Z(t) / Attenersi alla zavorra indicata Z(t) / S'en tenir au lest indiqué Z(t) / Unbedingt die angegebenen Ballastwerte einhalten Z(t) / Соблюдать указанный балласт Z(t)

D

□ 1,7 m

STANDARD 1,7 CITY - 12t

EN 14439 - C25

EN 14439 - D25

FEM 1.001
ΔH (m) H (m) F2 (kN) F3 (kN)
ΔH (m) H (m) F2 (kN) F3 (kN)
ΔH (m) H (m) F2 (kN) F3 (kN)

7	-	-	-	-
6	-	-	-	-
5	2,95 m	37,5	1244	914
4	5,9 m	34,6	1178	862
3	5,9 m	28,7	1076	772
2	5,9 m	22,8	990	747
+1	5,9 m	16,9	979	746

7	-	-	-	-
6	-	-	-	-
5	2,95 m	37,5	1244	914
4	5,9 m	34,6	1178	862
3	5,9 m	28,7	1076	772
2	5,9 m	22,8	990	747
+1	5,9 m	16,9	979	746

7	-	-	-	-
6	2,95 m	40,4	1202	865
5	2,95 m	37,5	1143	814
4	3,00 m	34,6	1085	764
3	3,00 m	28,7	988	695
2	5,90 m	22,8	922	680
+1	5,90 m	16,9	903	670

STANDARD 2,1 HC5S - 12t

□ 2,1 m L = 6,0 (m)

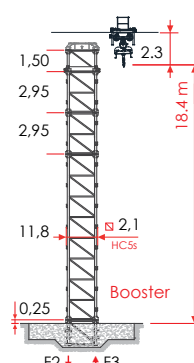
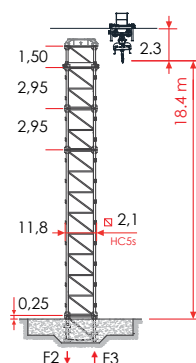
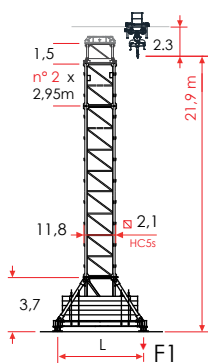
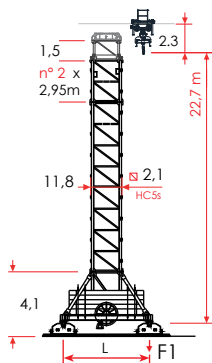
B

□ 2,1 m L = 6,0 (m)

E

□ 2,1 m

D

 □ 2,1 m **Booster**
D

B Travelling base

Base traslante

Grue à traslation

Fahrbarer Kran

Кран передвижной

E Base on steel pads

Base con piedi regolabili

Grue sur pieds réglables

Kran auf verstellbaren Füßen

Кран на регулируемых лапах

D Crane on embedded

Gru su tronchetto

Grue sur plinthe

Kran auf Fundamentplatte

Кран на фундаменте

STANDARD 2,1 HC5S - 12t

B					HC5S 2,1m					L = 6,0 m				
EN 14439 - C25					EN 14439 - D25					FEM 1.001				
ΔH (m)	H* (m)	Z** (t)	F1 (kN)		ΔH (m)	H* (m)	Z** (t)	F1 (kN)		ΔH (m)	H* (m)	Z** (t)	F1 (kN)	
7	2,95 m	61,0	122,3	1283	7	-	-	-	-	7	2,95m	61,0	102,9	1161
6	5,9 m	58,1	115,8	1136	6	-	-	-	-	6	5,9 m	58,1	90,0	1115
5	5,9 m	52,2	96,5	879	5	5,9 m	52,2	122,3	1235	5	5,9 m	52,2	64,2	889
4	5,9 m	46,3	77,1	680	4	5,9 m	46,3	102,9	934	4	5,9 m	46,3	51,2	684
3	5,9 m	40,4	70,8	614	3	5,9 m	40,4	96,5	699	3	5,9 m	40,4	51,2	603
2	5,9 m	34,5	64,2	584	2	5,9 m	34,5	77,1	616	2	5,9 m	34,5	51,2	603
+1	5,9 m	28,6	51,2	535	+1	5,9 m	28,6	70,8	556	+1	5,9 m	28,6	51,2	580

E					HC5S 2,1m					L = 6,0 m				
EN 14439 - C25					EN 14439 - D25					FEM 1.001				
ΔH (m)	H* (m)	Z** (t)	F1 (kN)		ΔH (m)	H* (m)	Z** (t)	F1 (kN)		ΔH (m)	H* (m)	Z** (t)	F1 (kN)	
7	2,95 m	60,2	122,3	1242	7	-	-	-	-	7	2,95 m	60,2	102,9	1132
6	5,9 m	57,3	115,8	1098	6	-	-	-	-	6	5,9 m	57,3	90,0	1086
5	5,9 m	51,4	96,5	845	5	5,9 m	51,4	122,3	1189	5	5,9 m	51,4	64,2	862
4	5,9 m	45,5	77,1	666	4	5,9 m	45,5	102,9	894	4	5,9 m	45,5	51,2	660
3	5,9 m	39,6	70,8	601	3	5,9 m	39,6	96,5	672	3	5,9 m	39,6	51,2	590
2	5,9 m	33,7	64,2	571	2	5,9 m	33,7	77,1	603	2	5,9 m	33,7	51,2	550
+1	5,9 m	27,8	51,2	522	+1	5,9 m	27,8	70,8	544	+1	5,9 m	27,8	51,2	510

Z**



Comply with the specified ballast Z(t) / Attenersi alla zavorra indicata Z(t) / S'en tenir au lest indiqué Z(t) / Unbedingt die angegebenen Ballastwerte einhalten Z(t) / Соблюдать указанный балласт Z(t)

STANDARD 2,1 HC5S - 12t
D

HC5S 2,1m

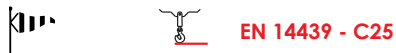
ΔH (m) H* (m) F2 (kN) F3 (kN)
ΔH (m) H* (m) F2 (kN) F3 (kN)
ΔH (m) H* (m) F2 (kN) F3 (kN)

7	2,95 m	56,7	2100	1882
6	5,9 m	53,8	1884	1674
5	5,9 m	47,9	1490	1296
4	5,9 m	42,0	1139	959
3	5,9 m	36,1	1019	695
2	5,9 m	30,2	938	629
+1	5,9 m	24,3	866	572

7	-	-	-	-
6	-	-	-	-
5	5,9 m	47,9	1975	1779
4	5,9 m	42,0	1524	1345
3	5,9 m	36,1	1128	963
2	5,9 m	30,2	938	638
+1	5,9 m	24,3	866	572

7	2,95 m	56,7	2056,2	1649
6	5,9 m	53,8	1863,9	1465
5	5,9 m	47,9	1485	1100
4	5,9 m	42,0	990	633
3	5,9 m	36,1	905	564
2	5,9 m	30,2	833	507
+1	5,9 m	24,3	767	490


D

HC5S 2,1m
BOOSTER

ΔH (m) H* (m) F2 (kN) F3 (kN)
ΔH (m) H* (m) F2 (kN) F3 (kN)
ΔH (m) H* (m) F2 (kN) F3 (kN)

10	-	-	-	-
9	-	-	-	-
8	2,95 m	62,6	2583	2345
7	5,9 m	59,7	2335	2110

10	-	-	-	-
9	-	-	-	-
8	-	-	-	-
7	2,95 m	56,7	2784	2557
6	5,9 m	53,8	2494	2284

10	-	-	-	-
9	2,95 m	62,6	2056	1649
8	2,95 m	59,7	1864	1465

 **H*** Climbing cage connection frame including / Telaio di raccordo a spinta incluso / Elément de telescopage compris /
 Включая соединительную раму подъемной клетки

E

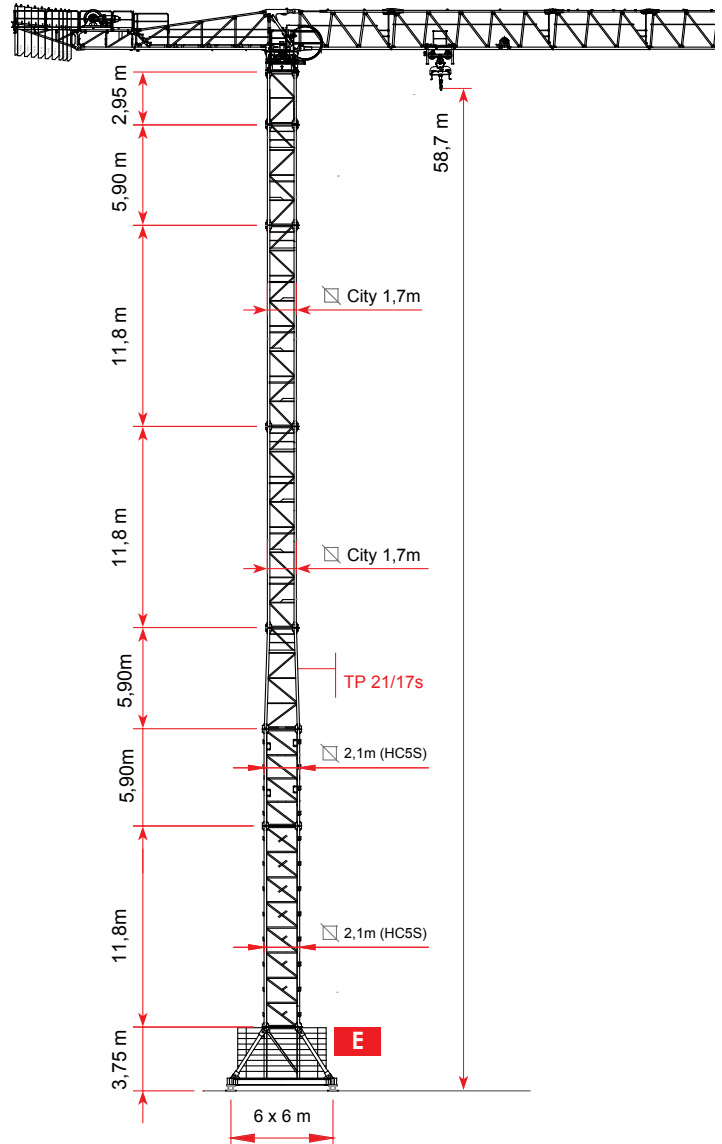
☐ CITY - TP21/17S
L = 6,0 m



EN 14439 - C25

ΔH (m) H (m) Z (t) F1 (kN)**

CITY ☐ 1,7 m	2,95 m	58,7	122,3	1016
CITY ☐ 1,7 m	5,9 m			
CITY ☐ 1,7 m	11,8 m			
CITY ☐ 1,7 m	11,8 m			
TP 21/17s	5,9 m			
HC5S ☐ 2,1 m	5,90 m			
HC5S ☐ 2,1 m	11,8 m			
Base 6x6 m HC5S	3,75 m			





For different heights contact the technical department / Per altezze diverse contattare l'ufficio tecnico / Pour des hauteurs différentes contactez le département technique / Für unterschiedliche Höhen Kontakt zum Technischen / Недопустимо увеличение высоты крана без согласования с технической службой производителя



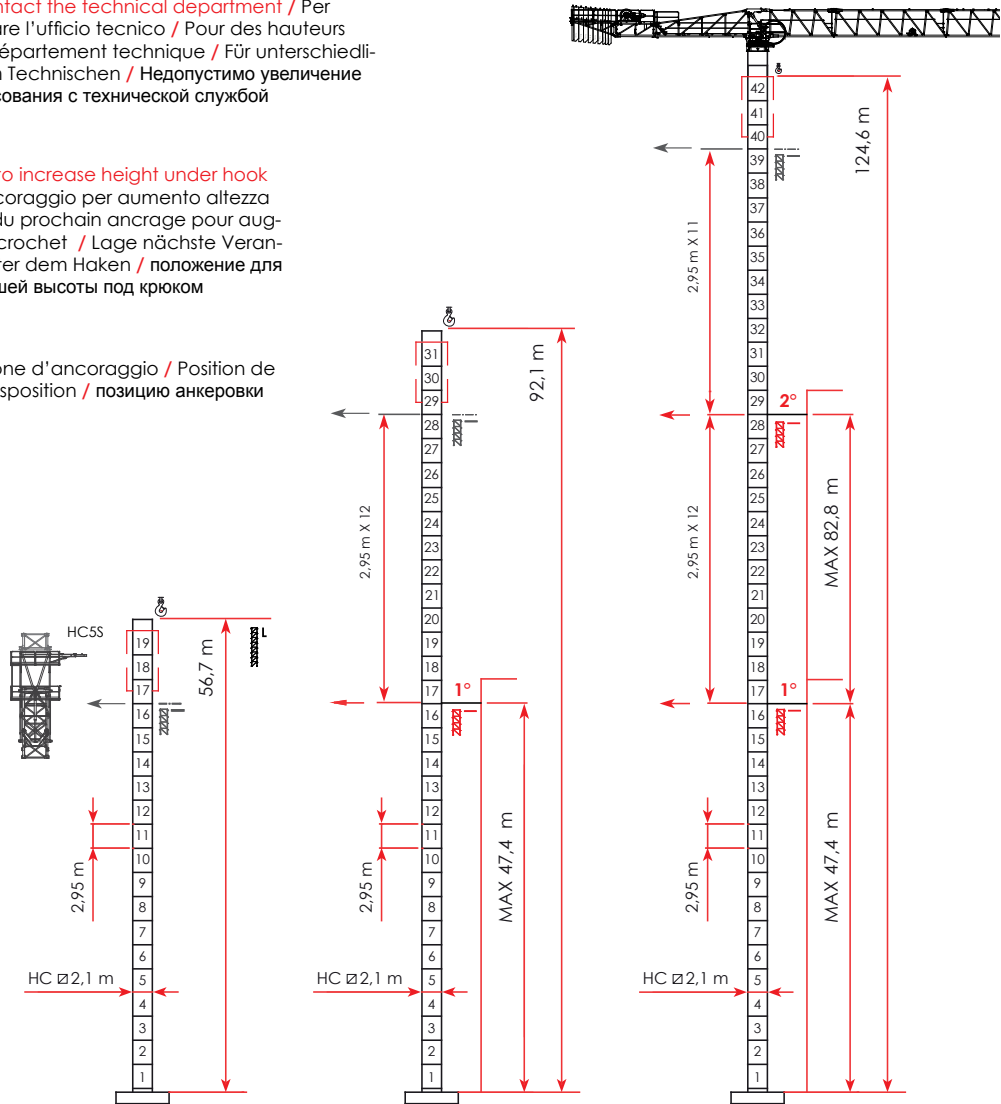
Position of next anchor to increase height under hook / Posizione prossimo ancoraggio per aumento altezza sotto gancio / Position du prochain ancrage pour augmenter la hauteur sous crochet / Lage nächste Verankerung zur Erhöhung unter dem Haken / положение для следующего якоря большей высоты под крюком



Anchor position / Posizione d'ancoraggio / Position de ancrage / Verankerungsposition / позицию анкеровки



FEM 1.001



Climbing crane / Sopralzo idraulico / Télescopage sur dalles / Kletterkrane im Gebäude / Кран поднимающийся на плитах перекрытия



For different heights contact the technical department / Per altezze diverse contattare l'ufficio tecnico / Pour des hauteurs différentes contact le département technique / Für unterschiedliche Höhen Kontakt zum Technischen / Недопустимо увеличение высоты крана без согласования с технической службой производителя



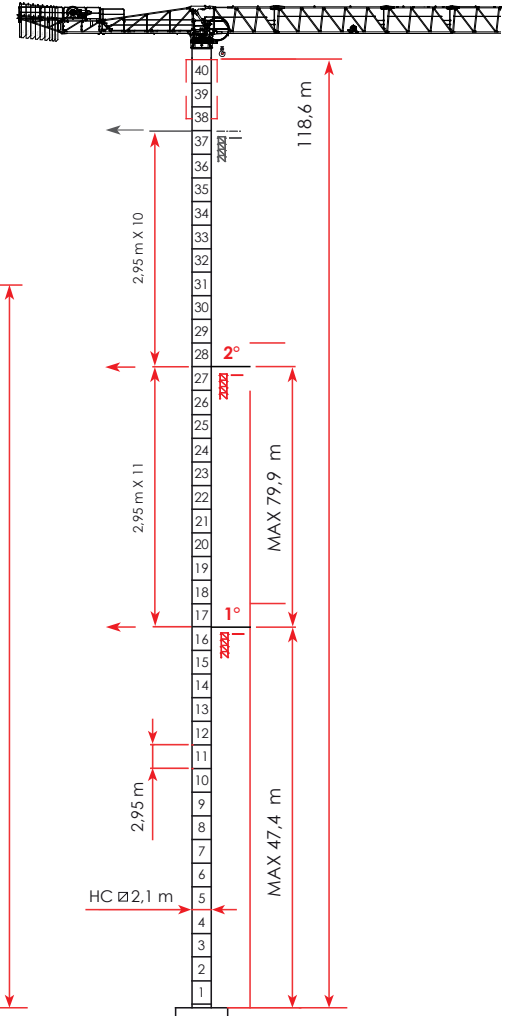
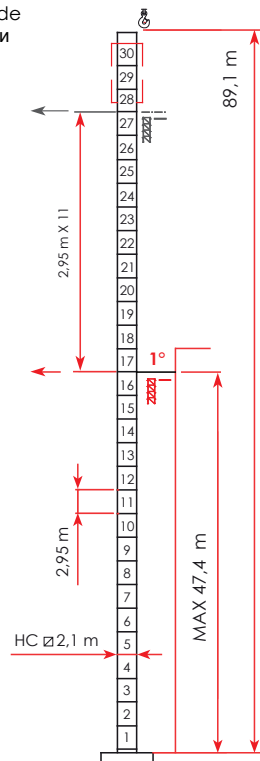
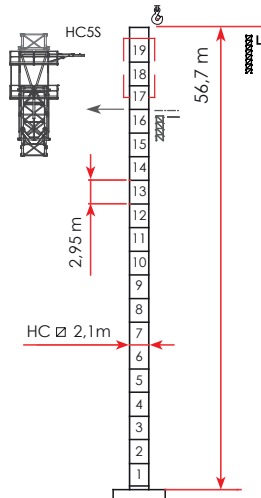
Position of next anchor to increase height under hook / Posizione prossimo ancoraggio per aumento altezza sotto gancio / Position du prochain ancrage pour augmenter la hauteur sous crochet / Lage nächste Verankerung zur Erhöhung unter dem Haken / положение для следующего якоря большей высоты под крюком



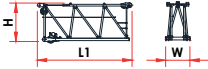

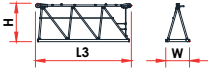
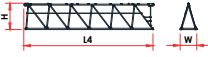
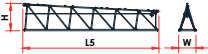
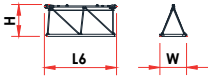
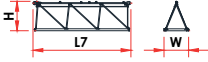

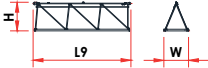

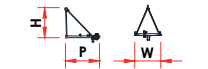
Anchor position / Posizione d'ancoraggio / Position de ancrage / Verankerungsposition / позицию анкеровки



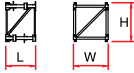
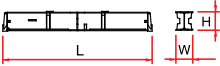
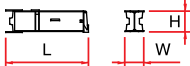
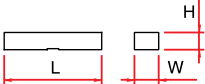
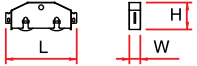
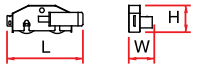
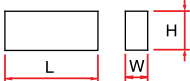
EN 14439 - C25



Climbing crane / Sopralzo idraulico / Télésopage sur dalles / Kletterkrane im Gebäude / Кран поднимающийся на плитах перекрытия

Description	Item	Pz	Drawing	Dimension (m)			Weight (kg)	
				L	W	H	Unit	Total
Jib element	n.	n°						
Elemento freccia	1	1		6,09	1,59	2,44	2 311	-
Élément de flèche	2			9,93	1,50	2,42	2 827	-
Auslegerelement jib section	3			6,05	1,50	2,40	1 208	-
Секция стрелы	4			11,79	1,50	2,38	1 895	-
	5			11,76	1,50	2,36	1 484	-
	6			4,06	1,50	1,79	431	-
	7			5,97	1,50	1,79	529	-
	8			5,96	1,50	1,78	415	-
	9			5,94	1,50	1,74	332	-
	10			4,01	1,50	1,73	232	-
	11			2,33	1,50	1,99	185	-

Description	Item n.	Pz n°	Drawing	Dimension (m)			Weight (kg)	
				L	W	H	Unit	Total
Counterjib - tournable, hoisting winch, trolley jib, electrical box, terminal element / Controfreccia - girevole, argano sollevamento, quadro elettrico, carrello freccia, portablocchi / Contreflèche tournante, treuil de levage, chariot de flèche, armoire électrique, élément terminal / Gegenausleger, Hubwinde, Laufkatze, Schaltschrank, Element für Gegengewichts Blöcke anführen / Консоль с поворотным кругом, лебедка, тележка, эл. ящик, противовесная консоль	2	1		10,11	1,840	2,460	-	3 958
				3,610	2,520	2,330	-	3 430
				4,03	2,38	2,310	-	1 138
			City 1,7 	2,066	2,35	1,723	-	3 950
			HC5s 	2,332	2,35	1,738	-	4 350
				2,305	1,933	2,070	-	-
Access balcony, cabin / Ballatoio cabina, cabina / Porte cabine / Kabine Podest, Kabine / Платформа кабины, кабина	3	1		3,640	5,020	2,450	-	5 686
				A234 1,18	0,41	2,910	3160	-
Counterweight block / Blocchi di contrappeso / Contre - poids / Gegengewichts Blöcke / Блоки противовеса	4	4		B234 1,18	0,24	2,910	1870	-
				C234 1,18	0,16	2,910	1255	-
				CITY 1,7 2,95	1,900	1,700	1400	-
Tower element / Elementi di torre / Elément de mature / Turmstück / Башенные секции	6	-		HC5s 2,95	2,300	2,300	1900	-
				CITY 1,7 5,90	1,900	1,700	2295	-
7	-	-		HC5s 5,90	2,300	2,300	3450	-
				CITY 1,7 11,8	1,900	1,700	4175	-
				HC5s 11,8	2,300	2,300	5920	-

Description	Item n.	Pz n°	Drawing	Dimension (m)			Weight (kg)	
				l	w	h	Unit	Total
Expendable foundation element / Tronchetto di fondazione / Elément a sceller / Fundamentanker / Анкер	8	1		CITY 1,7			830	-
				1,465	1,98	1,98	1398	-
Base main beam / Trave principale crociera di base / Poutre de chassis de base / Haupt-träger für Kreuzbase / Главная балка крестовины основания	9	1		4,5 x 4,5 m - 1,7m CITY			-	2595
				6,530	0,780	0,960	-	-
Half base beam / Semitrave di base / Semipoutre de chassis de base / Halb-träger für Kreuzbase / Полубалка основания	10	2		4,5 x 4,5 m - 1,7m CITY			1 235	2470
				3,212	0,680	0,974	-	-
Concrete pad / Blocco di appoggio / Sabot en béton / Beton Fuß / Опорный блок	11	4		B5			5 520	-
				3,600	0,900	0,750	-	-
Driving bogie / Bilancino di traslazione folle / Boggie fou / Schaukel Bewegung - Neutralstellung / Не приводной балансир	12	2		1,320	0,230	0,540	600	-
				-	-	-	-	-
Driven bogie / Bilancino di traslazione motorizzato / Boggie motorisée / Schaukel Bewegung - Betriebene / Приводной балансир	13	2		1,430	0,500	0,540	765	-
				-	-	-	-	-
Base ballast block / Blocco di zavorra / Lest de base / Grundballast / блок балласта	14	-		GB5F			5 100	-
				4,300	1,200	0,430	-	-



5 x 13,60 m

MRT234 HC _Jib 70 m • HUH 0,0 m

Top part / Parte rotante / Partie tournante / Drehender Kranteil / Поворотная часть



4 x 40 High cube

1 x 40 Box

1 x 40 Open Top

Included counter weight and cabin / Cabina e contrappesi inclusi / Cabine et contrepoids inclus / Kabine und Gegengewichts Blöcke – inbegriffen / Противовес включен - кабина



www.raimondi.co



Raimondi Cranes is proudly headquartered in our ancestral home of Legnano

Corso Garibaldi, 253 - 20025 Legnano - Milan, Italy

T +39 0331 548 061 r.a. | +39 0331 545 308 r.a. | F +39 0331 450 400 | info@raimondicranes.com

DATA SHEETS REV.00.2019 / ADL



The data presented in the 2019 Product Guide is subject to change without prior notice. Being a non-binding commercial document, the reader is required to consult instruction manuals for all technical information. / I dati oggetto della presente scheda potrebbero subire

modifiche senza preavviso. Essendo un documento commerciale non vincolante si fa obbligo di consultare il manuale di istruzioni per tutte le informazioni tecniche. / Les informations données dans les fiches présentes peuvent subir des modifications sans préavis. Étant un document commercial non contraignant, il est nécessaire de consulter le manuel d'instructions pour toutes les informations techniques. / Die daten der vorliegenden blätter könnten ohne vorankündigung geändert werden. Unverbindliches Vertriebsdokument. Für technische Informationen, siehe die entsprechenden Anweisungen. / данные, указанные в настоящих спецификациях, могут изменяться без предварительного предупреждения. Этот коммерческий документ не является юридически обязательным. Для получения технической информации, см. соответствующие инструкции.